

The Sioux City Art Center is a model public/private partnership between the City of Sioux City and the Art Center Association of Sioux City, with each contributing approximately one-half of the Art Center's annual operating costs. Without this model partnership, the Sioux City Art Center could not achieve the quality programs and services that it provides our community and region.

Among its many accomplishments of the past year, the Sioux City Art Center, for the first time in memory, employed a paid marketing campaign to promote the Art Center. The decision to implement the campaign was based on a fall in visitation that began with the start of the recession in 2007-2008. The campaign was successful. Beginning in March 2012 when the campaign was launched attendance sharply increased, matching and then surpassing pre-recession numbers. In conjunction with the beginning of the campaign, the Art Center also produced a new visitor survey to track the effectiveness of the campaign and gather additional information.

The visitor comments were instructive. Through the surveys we discovered that many of the new visitors did not know that the Art Center was free to the public or that we have an outstanding amenity for families in our Junior League Hands On! Gallery. In addition to the survey questions on their knowledge of the Art Center, we also asked what we could do to add to the experience of their visit. The overwhelming response was music and more seating. While we immediately moved forward on the music, we are planning to increase seating areas with furniture similar to what we currently feature in the Permanent Collection Gallery and adjacent study area.

While the marketing campaign and survey were helpful in making plans for the future, we also continued our commitment to serving a broader public with an expanded exhibition program. During the last year we presented 26 exhibitions supported with gallery talks and free educational materials.

Exhibition highlights included an unorthodox but very popular exhibition that invited the public to play in the Art Center's galleries. *Golf by Design* featured seven miniature golf holes designed and constructed by seven area architectural firms. Visitors had a great time playing the innovative and sometimes challenging course. A special thanks to these firms for taking on the project and making it a success. Another crowd pleaser was *Artists Choose Artists* in which 12 artists with significant connections to the Art Center were invited to show recent work as well as select an artist that they felt deserved more recognition to include in the exhibition. The result was an energetic exhibition that was well received by both artists and the public.



Al Harris-Fernandez presents Art Star check to Aaron Ungs.

While the exhibition program was supported with a range of materials, including gallery talks, labels and didactic panels, the most gratifying project was the latest addition of the Margaret Ann Martin Everist Education Initiative. The Initiative features educational materials that support the long-term exhibitions of works from the Permanent Collection that are included in the Margaret Ann Martin Everist Permanent Collection Gallery. The latest addition to these materials is the Family Guide series. The guides are comprised of five booklets designed to be used by families as self-guided tours of the Permanent Collection exhibition. Each eight-page booklet has a unique theme designed to engage young

people, including: Images of Things; Colors and Shapes; Animals in Art; Landscapes; and, Family Life at Home. The new family-friendly project was promoted with the Art Stars program that encouraged kids to complete the tours, be recognized as an Art Star and then become eligible to win prizes. In addition to being underwritten by the M. A. Martin Everist Foundation, the Family Guide project was also supported by a grant from the National Endowment for the Arts.

During FY2011-2012, the Art Center also moved forward on its plan to commission a major outdoor sculpture for its front lawn. Illinois artist Michael Dunbar was selected for the project by a jury comprised of Art Center staff, art professionals, and representatives from both boards and additional stakeholders. Dunbar has over 50 public art commissions to his credit and was the overwhelming choice of the jury to create this significant addition to the Art Center's campus. The project is being underwritten by the M. A. Martin Everist Foundation, with support from the Gilchrist Foundation and City of Sioux City. The sculpture is scheduled to be completed and installed by spring 2013 and dedicated in July 2013.

These are just a few of the highlights from FY2011-2012. Please see the rest of the report to find out what the Art Center's staff and supporters were able to accomplish in the past year.

I look forward to seeing you at the Art Center.

Al Harris-Fernandez
Art Center Director



ArtSplash



Youth Art Month Reception



Holiday Workshops



ARTworks Tours

Attendance

- Gallery 30,093 counted
- ArtSplash20,000+ estimated
- Public Art25,000+ estimated

Volunteer Hours

- Art Center 1,545 counted
- ArtSplash2,400 estimated

Tours

- ARTworks 37
(serving 929 fifth grade students)
- Other tours..... 50
(serving 1,162 individuals)

- Members..... 513
- Business 48
- Blockbuster Partners 22

- Exhibitions 28
- Lectures/Gallery Talks 6
- Public Programs 10

- Classes..... 79
- Students 1,387
- Contact hours 6,164

- Docents (dedicated volunteers)..... 12

Exhibitions during 2011-2012 included two ongoing exhibitions; thirteen temporary exhibitions in the Atrium, Gardner Room and Community Gallery on the first floor; and thirteen temporary exhibitions in the galleries on the third floor. These twenty-six temporary exhibitions included three featuring permanent collection artworks, eight one-person exhibitions of artists with ties to Siouxland, three group exhibitions of local artists, seven featuring works by local schoolchildren, one exhibition of a local collection, and four group exhibitions of regional artists.

Ongoing Exhibitions

Ongoing from May 26, 2007
Grant Wood's Corn Room mural

Ongoing from January 12, 2008
The Sioux City Art Center Permanent Collection

First Floor Exhibitions

through July 31, 2011
Tom Dillon

through August 14, 2011
William Burchard

July 30 – September 18, 2011
Project SOAR (Student Opportunities for Art Research) Exhibition

August 6 – September 18, 2011
Darren Maurer



Art from Sioux City Community Schools

September 29 – November 27, 2011
Art from Sioux City Community Schools: Eastside Elementary Schools

October 1 – November 27, 2011
Judy Boyle: My Tuscany Experience

December 3, 2011 – January 29, 2012
Anita Yeska: Into the Light

December 10, 2011 – January 29, 2012
Art from Sioux City Community Schools: Westside Elementary Schools

February 11 – March 25, 2012
Art from Sioux City Community Schools: Northside Elementary Schools

February 11 – April 1, 2012
The Juggler

April 7 – June 2, 2012
Sioux City Camera Club Exhibition

April 7 – May 20, 2012
Art from Sioux City Community Schools: East Middle and High Schools

June 9 – July 29, 2012
Art from Sioux City Community Schools: West Middle and High Schools



The 62nd Juried Exhibition

Third Floor Exhibitions

through July 3, 2011
The Briar Cliff Review Exhibition

through July 3, 2011
You Should Know Better

through July 24, 2011
In the Eye of the Beholder

July 16 – September 25, 2011
The 62nd Juried Exhibition

July 30 – November 27, 2011
The Legacy Collection Show II

October 8, 2011 – January 8, 2012
Ann Royer: Natural Curves

December 3, 2011 – February 12, 2012
The Fine Print: Works from the Collection of Morningside College

December 3, 2011 – February 12, 2012
Prints by Amy Foltz

January 21 – April 22, 2012
Artists Choose Artists

February 18 – April 8, 2012
Youth Art Month Exhibition

April 21 – July 1, 2012
Golf by Design: Indoor Mini-Golf Holes Designed by Sioux City Architects

May 9 – July 1, 2012
The Briar Cliff Review Exhibition

May 9 – July 1, 2012
Untitled

Gallery Talks / Lectures

Gilbert Vicario
Saturday, July 16, 2011
The 62nd Juried Exhibition

Phillip Chen
Saturday, July 30, 2011
The Legacy Collection Show II

Al Harris-Fernandez and Todd Behrens
Saturday, October 8, 2011
Ann Royer: Natural Curves and Judy Boyle: My Tuscany Experience

John Bowitz, Amy Foltz, Al Harris-Fernandez, and Todd Behrens
Saturday, December 3, 2011
The Fine Print: Works from the Collection of Morningside College and Prints by Amy Foltz

Al Harris-Fernandez
Saturday, April 28, 2012
Golf by Design: Indoor Mini-Golf Holes Designed by Sioux City Architects

Jeff Baldus, Todd Behrens, Sarah Ancona, Christopher Braunschweig, and Steve Joy
Thursday, May 5, 2012,
The Briar Cliff Review Exhibition

ACCESSIONS TO THE PERMANENT COLLECTION

Andrew Langoussis

Sojourner: Solar Reef, 2010

bronze

86 x 86 x 24 inches

Gift of the Yanney family, Jim, Charese and Jim Jr., in loving memory of Do Yanney; 2012.01



Billy Hassell, *Bluejay Ojibwe*

Billy Hassell

Bluejay Ojibwe, 2010

oil on canvas

48 x 50 inches

Purchase with funds donated in honor of Robert and Helen Jane Gleeson, Wilson and Louise Persinger, and James and Do Yanney; 2012.02

Cathy Palmer

Never Fully Revealed, 2006

oil on canvas

45.5 x 76 inches

Gift of the artist; 2012.03

LaVern Frank Rush

\$1.00 Dresses, 1941

lithograph

7.5 x 11 inches

Gift of The Rush Family; 2012.04

Window Shopping, 1941

lithograph

7.5 x 10 inches

Gift of The Rush Family; 2012.05

George Rush

Working on the Rails, 1940

lithograph

8.5 x 12.25 inches

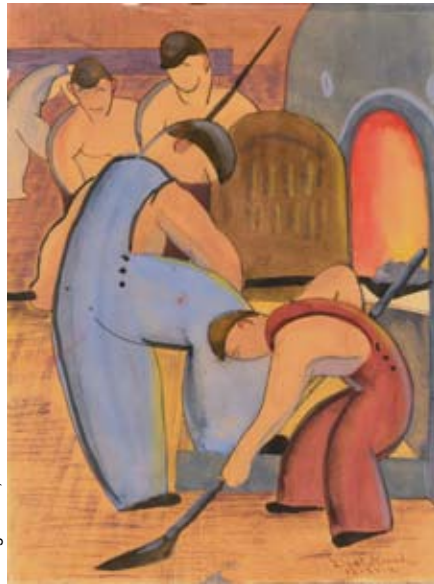
Gift of The Rush Family; 2012.06

Untitled (Men on Roof), 1940

lithograph

9 x 12.5 inches

Gift of The Rush Family; 2012.07



George Rush, *Furnace Men*

Furnace Men, 1941

watercolor and ink

11.25 x 8.5 inches

Gift of The Rush Family; 2012.08

Cross Town, 1941

lithograph

4.5 x 6.75 inches

Gift of The Rush Family; 2012.09

Daybreak, 1942

lithograph

7.25 x 11.75 inches

Gift of The Rush Family; 2012.10

Reconstruction, 1943

lithograph

9 x 12.5 inches

Gift of The Rush Family; 2012.11



Roy Langley, *Untitled (farm scene)*

Roy Langley

Untitled (farm scene), 1940

watercolor

16 x 22 inches

Gift of The Rush Family; 2012.12

Michel Esbèbe

Coquillage (Shellfish), 2010

color mezzotint on BFK Rives paper

Sheet: 20.5 x 15 inches;

image: 11.5 x 7.75 inches

Cleveland Print Club Subscription and Art Center Association of Sioux City Purchase; 2012.13

Leonard Baskin

Samuel Palmer, after the watercolor by Walter, 1956

wood engraving

2 1/4 x 1 7/8 inches

Gift of Paul Chelstad; 2012.14

Steve Kammerer

Vase, 2010

wheel-thrown; raku fired with horsehair and organic matter on a ferric chloride base

13 x 9.5 (diameter) inches

Gift of the artist; 2012.15

Marvel Cox

They are as Asleep, 1986

acrylic on paper

17.5 x 31.5 inches

Gift of Chris Jensen and Beth Harms; 2012.16

Untitled (three figures), ca. 1980s

acrylic on panel

18 x 22 inches

Gift of Chris Jensen and Beth Harms; 2012.17

Sketchbook of landscapes

pen and ink

9 x 12 inches

Gift of Chris Jensen and Beth Harms; 2012.18

Night Vigil, ca. 1980s

acrylic on panel

11.25 x 22 inches

Gift of Chris Jensen and Beth Harms; 2012.19

Untitled (four figures), ca. 1980s

charcoal on paper

15 x 21.75 inches

Gift of Chris Jensen and Beth Harms; 2012.20

Untitled, undated

watercolor

22.5 x 27 inches

Gift of Al Harris-Fernandez; 2012.21

Elizabeth Dooley

Purple Haze, 2006
photograph printed on archival premium
lustre paper
12 x 18 inches
Gift of the artist; 2012.22

Doyle Burbank-Williams

In the Midst, ca. 2006
digital print
7.25 x 10 inches
Gift of Rita and Gerald Iversen; 2012.23



Nan Wilson, Primary Impulses

Nan Wilson

Primary Impulses, 1993
oil and earth on canvas
78 x 144 inches
Purchase from the artist with donated
funds; 2012.24

Principal Donor

Juliet Everist

Donors

Jeff Baldus
Gail & Jack Bernstein
Nancy Giles
Tom & Henrietta Shuminsky
Mary & John Van Dyke

Additional Contributions

Regis Garvey
Susan Hatfield
Alan & Terri McGaffin
Shannon Sargent

Dolie Thompson

Still Life, 2010
digital photograph
18 x 29 inches
Purchase from the artist with Art Center
Association of Sioux City funds; 2012.25

Ann Royer

Untitled, 1988
acrylic on canvas
73 x 49 inches
Gift of the artist; 2012.25

Untitled (Face), not dated
acrylic on paper
8 x 5.25 inches
Gift of the artist; 2012.26

Untitled (Abstract), 2010
acrylic on paper
10.25 x 7.5 inches
Gift of the artist; 2012.27

Untitled (Horse), not dated
pen on paper
10.75 x 8.5 inches
Gift of the artist; 2012.28

Untitled (Horse), not dated
pen on paper
9.5 x 9 inches
Gift of the artist; 2012.29

Untitled (Three Figures), not dated
pencil on paper
14.25 x 11.25 inches
Gift of the artist; 2012.30

Untitled (Figure in Frame), not dated
charcoal on paper
15.5 x 12 inches
Gift of the artist; 2012.31

Untitled (Two Figures), not dated
pencil on paper
16.25 x 11.75 inches
Gift of the artist; 2012.32

Untitled (Horse), not dated
charcoal on paper
16.75 x 14 inches
Gift of the artist; 2012.33

Untitled (Seated Nude), not dated
charcoal on paper
24 x 18 inches
Gift of the artist, 2012.34

Dolie Thompson

Still Life with Grapes, 2010
digital photograph
18.5 x 29 inches
Purchase from the artist; 2012.35

Amy Foltz

Present Path – Holding On, 2000
Intaglio (ed. 1/7)
9 x 6.75 inches
Gift of the artist; 2012.36

Bill Scott

The Gray-Green Bottle, 2009
drypoint and roulette on Tiepolo paper
sheet: 30 x 22.5 inches; image: 20 x
14.5 inches
Cleveland Print Club Subscription
Purchase; 2012.37



Valerie Beller, Artery

Valerie Beller

Artery, 2006
oil on canvas
36 x 33 inches
Legacy Collection purchase with private
funds from the Blockbuster II Partners,
the Margaret Heffernan Permanent
Collection Fund, the M.A. Martin
Everist Foundation, and the Gilchrist
Foundation; 2012.38

Julie Blackmon

Crystal Ball, 2006
archival pigment print
22 x 22 inches
Legacy Collection purchase with private
funds from the Blockbuster II Partners,
the Margaret Heffernan Permanent
Collection Fund, the M.A. Martin
Everist Foundation, and the Gilchrist
Foundation; 2012.39



Julie Blackmon, Crystal Ball

High Chair, 2006
archival pigment print
22 x 22 inches
Legacy Collection purchase with private
funds from the Blockbuster II Partners,
the Margaret Heffernan Permanent
Collection Fund, the M.A. Martin
Everist Foundation, and the Gilchrist
Foundation; 2012.40



Ingrid Lilligren

Accumulation, 2010
 porcelain with crystalline glazes
 12 x 9 x 9 inches
Legacy Collection purchase with private funds from the Blockbuster II Partners, the Margaret Heffernan Permanent Collection Fund, the M.A. Martin Everist Foundation, and the Gilchrist Foundation; 2012.44

Tracy Miller

Trio, 2006
 oil on canvas
 48 x 48 inches
Legacy Collection purchase with private funds from the Blockbuster II Partners, the Margaret Heffernan Permanent Collection Fund, the M.A. Martin Everist Foundation, and the Gilchrist Foundation; 2012.45



Tracy Miller, Trio

Alex Brown

Pond, 2010
 oil on canvas
 38 x 40 inches
Legacy Collection purchase with private funds from the Blockbuster II Partners, the Margaret Heffernan Permanent Collection Fund, the M.A. Martin Everist Foundation, and the Gilchrist Foundation; 2012.41

Phillip Chen

Fiji Mermaid, 2005
 relief etching
 31 x 23 inches
Legacy Collection purchase with private funds from the Blockbuster II Partners, the Margaret Heffernan Permanent Collection Fund, the M.A. Martin Everist Foundation, and the Gilchrist Foundation; 2012.42

Prairie Breaker, 2002

relief etching
 31 x 23 inches
Legacy Collection purchase with private funds from the Blockbuster II Partners, the Margaret Heffernan Permanent Collection Fund, the M.A. Martin Everist Foundation, and the Gilchrist Foundation; 2012.43



Susan Chrysler White, Ex-Voto

Susan Chrysler White

Ex-Voto, 2008
 acrylic and enamel on canvas
 65 x 72 inches
Legacy Collection purchase with private funds from the Blockbuster II Partners, the Margaret Heffernan Permanent Collection Fund, the M.A. Martin Everist Foundation, and the Gilchrist Foundation; 2012.48

James Shrosbree

DELL (ray), 2011
 enamel with tape and wire on panel
 9 x 12 inches
Legacy Collection purchase with private funds from the Blockbuster II Partners, the Margaret Heffernan Permanent Collection Fund, the M.A. Martin Everist Foundation, and the Gilchrist Foundation; 2012.46

James Shrosbree

Medici (nn series), 2005
 gouache and acrylic with pen on paper
 10.25 x 14.75 inches
Legacy Collection purchase with private funds from the Blockbuster II Partners, the Margaret Heffernan Permanent Collection Fund, the M.A. Martin

Docent Program

Our team of twelve dedicated volunteer docents consistently attended informative and educational tours given at the beginning of every new exhibition by the director/curator and studio program coordinator. We recently have added two new docents, Susie Rodriguez and Jay Morris. We are extremely grateful to the docents for conducting 87 tours, serving 2,091 children and adults. Included in these numbers is the *ARTworks* program, serving fifth grade students who receive free busing, a guided tour and an opportunity to create a piece of artwork based on the Grant Wood murals. There were 37 *ARTworks* tours with a total of 929 fifth grade students.

Project SOAR

Student Opportunities for Art Research, held throughout the month of June, is intended for artistically talented high school students who would enjoy and learn from an intense, fifteen-hour art workshop. This year's Project SOAR utilized the expertise of four area artists and educators in ceramics, Shawn Adams; drawing, Pauline Sensenig; painting, Jodi Whitlock; and printmaking, Amy Foltz. Nineteen students from nine area high schools took advantage of this program which is underwritten by the Art Center Association of Sioux City.

Youth Art Month

In celebration of Youth Art Month, the Sioux City Art Center held its 23rd Annual Juried Youth Art Exhibition for area high schools, from February 18 – April 8, 2012. This year's juror, Nan Wilson, thoughtfully chose 103 pieces for the exhibition out of 488 submitted artworks. The opening reception on Sunday, February 19th was extremely well received with 300 children and adults filling the atrium.

Mayor Bob Scott, Superintendent Dr. Paul Gausman, Art Center Director Al Harris-Fernandez and Visual Arts Head Instructor Lance Hankins assisted in the presentation of awards.

Community requested Classes, Workshops and Outreach Programs

The Education Department hosted 24 community-requested workshops throughout the year including the following groups: Girl Scouts; Boy Scouts; Upward Bound; Home School; Girls Incorporated; Empty Bowls project; Siouxland Food Bank; Jackson Recovery, Tracy Koch Daycare; Nodland School Special Needs; DARE Lock-in; The Red Cross; Building Blocks Day Care (Sergeant Bluff); Building Blocks Day Care (Outer Drive, Sioux City) Kinder Cottage Daycare, North Middle School Carnival, Wells Blue Bunny, Life Long Learning Program, Thrivent Financial and Beyond the Bell.

Education Gallery

The William T. Dible Hallway and the Metz Education Hallway on the second floor have been designated as spaces for hanging artwork created by students and faculty at the Art Center. The displays were changed out a total six times throughout the year and included student art, class schedules and other art related subjects, such as the elements and principles of art.

Artful Birthday Parties

The Art Center has hosted 33 birthday parties in the past 12 months, 14 more than the year before! Under the direction of our inventive teachers, 366 participants created fun projects and memories.

ArtCamp 2011

This was the eighth year the Art Center has hosted ArtCamp. This year's camps

were a huge success with 163 children attending. ArtCamp 2011 culminated with an exhibition of the children's artworks, and a reception on August 14. These works were selected by the children and displayed from August 14 – September 27 in the Education Gallery on second floor.

Classes and Workshops

During the 2011-2012 quarterly semesters, 114 adult and children classes were offered at the Art Center. The number of adult and children classes was 79 classes. A total of 1,387 students participated in the classes for a total of 6,164 teacher-student contact hours. Nearly all of the adult classes were available for graduate credit or teaching license renewal credit through Northwest AEA, Briar Cliff University and Morningside College.

Holiday Gift-Making Workshops

Our annual Holiday Workshops were held December 3, 2011. Eight art projects and refreshments were offered free of charge to the public. Under the guidance of five instructors, 150 children and adults participated in this fun annual event.

Spring Workshops

Spring workshops were held at the Art Center on April 31, 2012. Celebrating the arrival of spring, 50 children had fun by making grass houses, beady babies, spring banners, and mosaic planters. The tuition for these workshops was \$5 per project. Popcorn and punch was available for refreshments.



DEVELOPMENT

BLOCKBUSTER II PARTNERS

Founder

Avery Brothers Sign Company
Gardner Foundation
Sioux City Journal
Powell Broadcasting

Patron

KTIV – News Channel 4
Irving, Jr. & Carolyn “Tigger” Jensen
Drs. Allan S. Manalan & Diane K. Werth ●
Security National Bank *
Wilson Trailer Company

Investor

BPI Technology, Inc.
Great Southern Bank
Klinger Companies, Inc. *

Sponsor

Anonymous

Contributor

Eunice Acker & Donnin Custer
Richard C. Brown, Jr. M.D. & Aaron Beutler
Chesterman Company *
Rick & Regis Garvey
Innovative Benefit Consultants – Stuart Lee
Mercy Medical Center – Sioux City *
Tegra Corporation ●
Thompson Electric/Electric Innovations
Wells Fargo Bank *

* Association Board Member affiliation

● Art Center Trustee affiliation

2011 – 2012 BUSINESS PARTNERS

Grant Wood

Argosy Casino
Henjes, Conner & Williams P.C.
M Plus Architects, Inc.
Nutra Flo Company
Siouxland Magazine

Corita Kent

C.W. Suter Services
Great West Casualty
Gunderson's Jewelers *
Iowa-Nebraska State Bank
L & L Builders
Pathology Medical Services of Siouxland
Poulson Advertising

Thorpe & Co. Jewellers

Oscar Howe

Cannon Moss Brygger & Associates
Dakota Dunes/North Sioux City Times
Greenberg Jewelry Co.
K&B Transportation
LaVentura *
McClintock Insurance
Mills Shellhamer Puetz & Assoc. *
PLaN Architects

Principal Financial Group

Walton Dental Health
Whiskey Creek Pottery

Ary Stillman

Adkins Tax Service
Avé Medical Laser Clinic/Spa
Body & Soul Salon and Spa
Book People
Bruening Eye Specialists
Burg Studios
Charlie Zook Motors
Dakota Dunes Development Company
Davenport Cleaners
Family Health Care of Siouxland
Fouk Brothers Plumbing & Heating Co
Gallery One
Henry Homes 'n More
June E. Nylén Cancer Center
Kollman Appliance
MidAmerican Energy Co.
Office Systems Company
Pinnacle Bank*
Rosenthal Foods
Shay Studios
Siouxland Federal Credit Union
Douglas & Judy Stanwick
Sunnybrook Dental *
Windows America & Dog Watch

Bold – New memberships

* Association Board Member affiliation

ANNUAL MEETING RECOGNITIONS

ASSOCIATION BOARD RECOGNITION

New Association Board Members

Lisa Leopold – Community Advocate
Emma Rooney – Argosy Casino
Laura Troth – Miller Brothers Furniture

Retiring Board Members

Jay Chesterman – Chesterman Co.
Mary Ellen Hartman –
Klingering Properties, Inc.

Novice Board Member

Emma Rooney

Outstanding Volunteer Fundraiser

Lora Holton

Distinguished Association Members

Kermit Dahlen & Mari Kaptain-Dahlen

Business Partner

Dakota Dunes Realty

Media Partner

Sioux City Journal

Service Excellence Award

Jay Chesterman

Recognized as a tremendous advocate for the Art Center after completing eight years of service as an Association Board member, Jay is one of only three people to have served two terms as president of the Association Board: 2006-2007 and 2010-2011. Jay and his family's business have been Blockbuster I & II Partners as well as a major supporter of art center's ArtSplash.

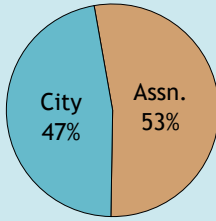
Outstanding Art Center Supporter

Jim, Charese, and Jim Jr. Yanney

The Yanney family has a tireless history of support for the Art Center. They are founding members of the Renaissance Society and the family continues to volunteer their time, talents and resources to help the Art Center. Most recently, they purchased for the Permanent Collection Andrew Langoussis' sculpture, *Solar Reef*, in honor of Do Yanney.

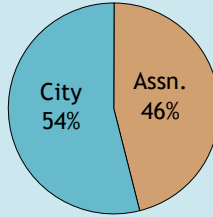
BUDGET SUMMARY

The Sioux City Art Center is a public/private partnership between the City of Sioux City and the Art Center Association of Sioux City.



2011/2012
 \$ 618,190
 685,614
 \$1,303,804

City of Sioux City Appropriation
 Art Center Assn. of Sioux City Support
TOTAL

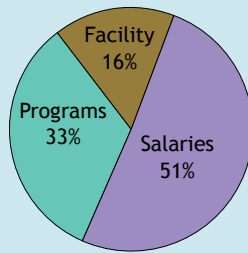


2010/2011
 \$ 743,125
 620,892
 \$1,364,017

City of Sioux City Financial Report

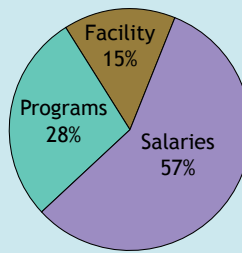
	2011/2012	2010/2011
Employees	\$477,170	\$590,665
Supplies & Services	24,489	29,996
Repairs & Improvements	38,680	42,923
Utilities	77,851	79,541
TOTAL	\$618,190	\$743,125

Sioux City Art Center Expenses



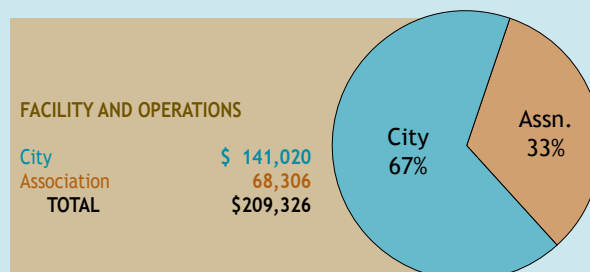
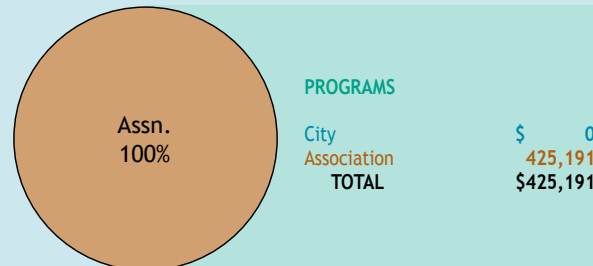
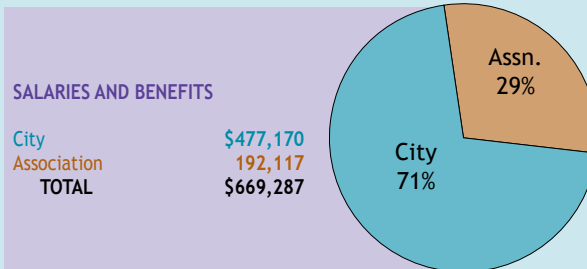
2011/2012
 \$ 699,287
 425,191
 209,326
 \$1,303,804

Salaries and Benefits
 Programs
 Facility/Operations
TOTAL



2010/2011
 \$ 781,645
 373,069
 209,303
 \$1,364,017

2011/2012



ARTFUL APPRECIATION

UNDERWRITING, TRIBUTES, GIFTS, MEMORIALS, IN-KIND

Underwriting

Quarterly Calendar

Security National Bank

Leonardo da Vinci – Admission Tickets

Joni Todd

Tributes

Edith Greenstone

Irene Fisher

Frances Kline

Irene Fisher

Do Yanney (Solar Reef Sculpture)

James, Charese & James, Jr. Yanney •

Gifts

Endowment

Aaifs Family Foundation

General Operating Fund

Buena Vista Regional Medical Center

Timothy and Sally Gruber

Joan Phelan

Dr. Kenneth Roach

Sooland Antique Cars, Inc.

Memorials

Charmaine Buckley

Frank and Sandra Baron

Ronald and Linda Bowden

Mark and Marie Buckley

Mary Desch and Elizabeth H. Hay

H. William Desch, Jr.

Charles and Janet Duchek

Douglas Duchek Family

Jean and Michael Fielden

Harrison and Joyce Fisher

Jeffrey and Rebecca Gerhart

Robert and Janette Hildebrand

LeRoy and Janet Houdeshell

Kathleen Jenness

Pokey and Colin Jensen

Ardys Johnson

Merle and Kim Long

Russell and Kristin Kreutz

Ruth Ketelsen McLaman

Cindy McLaughlin and Dwight Packard

Larry and Kathy Lantz

Blanche Overland

Rick and Joan Robinette

Margaret (Peggy) Roush

Douglas and Jane Rice

James and Fern Rocklin

Carol Smith

Noel and Patricia White

L. Garland Everist

Colin Jensen, Irving F. Jensen, Jr., Mark Jensen
and Erik Jensen on behalf of the Irving and
Elizabeth Jensen Foundation

Ruth Johnson

Fred and Joan Rupp

Al Kandik

John & Alicia Sandre

Julie Snyder

In-Kind

Avery Brothers Sign Company

Gene Ebner

Prestige Collision Repair Centers

Christine Schlitz
Smurfit Stone Container Corp.

AN ARTFUL EVENING

Donations

Marilyn Christiansen

Andrew Galinsky

Gleeson Family Foundation

Holland Dental

Klinger Company

Steve & Amy Macfarlane

Julie O'Connor

Joe & Diana Twidwell*

ARTISTRY IN THE KITCHEN

Presenting Sponsor

Dakota Dunes Realty

Event Sponsors

Ethan Allen - Sioux Falls

Modern Kitchen Design

Studio 427

VT Industries

Tour Book Sponsors

Adam Builders, Inc.

Boatman Tile Company

Brown Wegher Construction

Chamberlain Tile

Dave's Wood Floors

Dogwood Pet Hotel

Dunes Animal Hospital

Edward Jones

Farrell's Heating & Air Conditioning

Fouk Bros. Plumbing

Holland Dental

Home Builders Assoc.

Kitchens by Cyndi

Kitchen Dressings

Kollman Appliance

Lessman Lighting

Todd Hagaman Construction

Wilsey Company

Patron Bag Sponsors

Avé Med Spa

River Edge Optical

The Dogwood

Tomacelli's

Homeowners

Mark & Julie Adam

Mark & Kris Brown

Larry & Connie Chapman

Jerry & Becky Holbrook

Sam & Kelly Kohout

Rick & Shannon Liddell

Charles & Pam Mostek

Joanie Rizk

Andy & Sue Rodawig

Eldon & Regina Roth

Johnny & Shari Tureaud

Donation

Coldwater Creek

Cup O' Joy

Dunes Family Pharmacy
Tim & Lora Holton
Klinger Properties, Inc.
KMEG/KPTH
Lisa Leopold
David & Marcia Levin
Mercy Medical Center *
MidAmerican Energy Co. *
Carolyn Sloan
Target
Brenda Theelan
Billy Warhol
WineStyle

Committee

Chairs: Luanne Giesler *, Lora Holton,
Shannon Liddell *
Stacie Anderson *
Joyce Barnes *
Greg Berenstein *
Jay Chesterman *
Sandy Ellis *
Beth Fravel
Helen Glazer *
Dolores Guest *
Mary Ellen Hartman *
Paula Jacobsen *
Marilyn Kilbride
Lisa Leopold *
Jessica Nagel
Sue Rodawig
Mary Sterk *
Suzan Stewart *
Joe Twidwell *
John Wagner *
Becky Walters

CITY ART QUILTS

Underwriters

Jack & Barbara Aaifs
Donna Bergeson
Big Soo Terminal •
Chesterman Company *
Diamond Vogel Paints
Gardner Foundation
Goosmann Law Firm
LaVentura *
Mercy Medical Center *
Bill & Nancy Metz
Morningside Commercial *
Motor Parts Central
Palmer Candy
Siouxland Chamber
Tower Medical

FASHION AS ART

Presenting Sponsor

Art Center Association of Sioux City
LaVentura

Event Sponsors

CableONE
Greenberg Jewelry Co.
Gunderson's Jewelers
Thorpe & Co. Jewellers

Supporting Sponsors

Avé Medical Laser Clinic & Spa
Luciano's
Siouxland Magazine
Sunnybrook Dental

Table Sponsors

Eunice Acker
Argosy
Gabi Galinsky
Luanne Giesler *
Greenberg Jewelry Co.
Dolores Guest *
Gunderson's Jewelers *
Jackson Recovery
LaVentura *
Cindy McLaughlin
Mercy Medical Center *
Mills Shellhammer Puetz *
Thorpe & Co. Jewellers

Pledges

Anonymous
Joellen Aesoph
Julie Anfinson
Sandi Baron
Margie Bennett
Julie Casavant
Camille Cloud
Susan Conner
Emily Gallego
Carla Galloway
Gretchen Gondek
Marilyn Hagberg
Amy Hammerstrom
Mary Ellen Hartman *
Kent and Michele Ivener
Lisa Kalaher
Barbara Knepper
Kathy LeGrand
Sheryl McGowan
Cindy Moser
Cathy Perley
Polly Peterson
DeeEtta Riley
Fern Rocklin
Sherry Rossiter
Debbie Sanders
Sharon Schroeder
Deb Smith
Mary Sterk *
Mindy Stevens *
Suzan Stewart *
Janet Stone
Laura Troth *
Becky Walters

Honorary Chairs

Mari Kaptain-Dahlen *
Cindy Moser
Regina Roth

Committee

Co-Chairs: Stacie Anderson* & Dolores Guest*
Eunice Acker
Joyce Barnes *
Donna Behrens
Karen Clark
Carla Galloway
Luanne Giesler *

Jane Gilbert
Di Haindfield
Deb Hoelsing
Paula Jacobsen *
Lisa Kalaher
Elise Kreisberg
Shannon Liddell *
Sheri Lund *
Laurie Mills *
Lillyan Rodriguez
Amy Sachnoff
Mindy Stevens *
Leah Wolfe

EDUCATION

Scholarships

Scott Family Scholarship
Tiffany Nettleton

Gift/Donation

Julie Delperdang
Troy & Liz Ford
RockTenn
Dr. Wesley & LuLu Washburn

Docents

Diane Barnett
Janice Bristow
John Carter
Margot Chesebro
Joan Jackson
Vivian Miller
Jay Morris
Toni Ness
Austin Rodriguez
Susie Rodriguez
Rosemary Sheehan
Sue Siedschlag
Ann Smith
Paula Warp

EXHIBITION

The Values of Drawing

Aalfs Manufacturing, Inc.

Youth Art Month Exhibition

Pinnacle Bank*

Leonardo da Vinci: Invention Sponsors

Argosy Casino
Book People
Fouk Bros. Plumbing & Heating Co.
LaVentura*
PLaN Architects
Premier Travel
Principal Financial Group

ART CENTER'S ARTSPLASH

ArtSplash 2011 Steering Committee

Tonia Abell
Lynne Baller
Lynn Bowman
Anne Cleghorn
Sheri Cork

Andrew Hauptmann
Carolyn Hauptmann
Linda Mansfield
Jennifer McReynolds
Kamali Muthukrishnan
Mike Oliver
John Potash
Helena Potash
Ben Rouse
Hilary Sanders
Ellen Shaner
Logan Shine
Connie Sunderman
Curt Vogel
Becky Vogel
Kim Wink

Bold – New memberships

* Association Board Member affiliation

● Art Center Trustee affiliation

ASSOCIATION MEMBERS

Renaissance

Jack & Barbara Aalfs
Jeff Baldus •
Michael & Margie Bennett
Cy & Karen Chesterman
Kermit Dahlen & Mari Kaptain-Dahlen *
Hubert Everist
Jean Gardner
Joseph & Luanne Giesler *
Milt & Helen Glazer *
Irving & Tigger Jensen
Colin & Pokey Jensen
Rick & Shannon Liddell *
Dennis Mahr & Carol Langin
Jim & Mary McClintock •
Bill & Nancy Metz
John & Connie Persinger
Lousie Persinger
Ginny Peterson
Mark & Polly Peterson
Tim & Anna Petersen
Diane Werth • & Allan Manalan
Jim Yanney • & Charese Yanney

Leader

Tim & Leslie Bebee
Edith Greenstone
Al & Karen Harris
Craig & Jennifer Letch
Cindy McLaughlin & Dwight Packard •
*Julian & Lisa Leopold **
Bonnie Zetterman
Jan Zelfer-Redmond & Tom Redmond

Charter

Kenneth Ackerman
*Wayne & Joyce Barnes **
Dr. Thomas & Jean Carroll
Margot Chesebro
John & Sylvia Cordoue
Larry & Julie Delperdang
Joel & Debi Durham *
Bill & Lyn Edmonds
David & Delores Guest *
Marvin & Karen Heidman
Louetta Lipshutz
Bob & Paula Jacobsen *
Gregory Jones • & Dr. Carol Roge *
Khalid, Terri & Sam Rasheed
Susan & Sherm Wollesen

Donor

Sarilye Atlas
Greg Berenstein *
Patricia Bortscheller
Jack & Janice Bristow
Dr. Randall & Deborah Burnight
Thorpe & Joann Clark
Joe & Pam Coughlin
Betty De Groh
Warren Dunkle
Richard & Marilyn Engle
Brian Everist
Dr. Paul & Penny Fee
Adam & Alyssa Feiges
Bill & Debbie Feiges
Gary Ford
Larry & Sheryl Foster
Tom & Carol Geu

Nancy Giles
Galen & Carlene Gehrts
Jane Gilbert *
Lee & Karen Goodwin
Daniel & Gyna Greenwell
Greg & Teri Grupp
Mike & Mary Gay Gunsch
John & Marilyn Hagberg
Rita Grimm & Robert Harris
Dan & Sally Hartley
Stewart & Mary Ellen Hartman *
Andrew Heiser
Eileen Helvig
Chris & Margaret Holman
David & Barbara Holtze
David & Diana Howard
Ardys Johnson
Kyle & Jacki Kelly
Charlotte Kock
Clayton & Janice Kookier
Sonya Kostan
Randy & Pam Kramer
Herb & Rosie Kuehne
Glenn & Marian LeGrand
Mary Lonergan
Ken & Debbie McCalla
Shawn McCoy
Paul & Mary Ellen McGuirk
Jane Meginnis
Robert Mishne
Caroline O'Kane Sands
Stan & Barbara Orzechowski
Dr. David & Joan Paulsrud
Skip & Cathy Perley
Dr. Carolyn Rants
Dr. Bob & Kaye Rasmus
Mrs. William Rodawig
Carlos & Lillyan Rodriguez *
Michael Schlessner
Tim & Laura Schmidt
Robert & Molly Seff
Byron Sexton
Bill & Cora Sibley
Mary Sterk *
Robert & Suzan Stewart *
Jerry Stoup
Dr. Lloyd Tinkle
Gary & Laura Troth *
Theresa & James Verschoor
Anita Wendt
Bonnie West
Dr. Robert & Maxine Whiteside
Helenanne Williams
Thomas & Mary Wilson
Bud & Joee Ziebell

Family

Curtis & Barb Abney
Cynthia Adajar
Jacquelyn Adams
The Allard Family
John & Karmon Amsler
Eugene & Lola Anderson
Jason & Virginia Anderson
Todd & Stacie Anderson
Terri & Mark Avery
Ross & Kimberly Bacon
Craig & Sandy Bainbridge
Paul & Lori Baker

Rona Ballard
Frank & Sandi Baron
Cathy Beard
Aaron & Tawnya Becker
Debbie Beem
Paula Bennett
Dr. Randall Bergen
Michael & Gina Bernstein
John & Allison Beumler
Manny & Mary Bikakis
Dr. Robert & Mrs. Billiar
Dr. Richard & Theresa Bokemper
Richard & Joyce Bond
Joe & April Bousquet
Ron & Linda Bowden
Kathie Petrie & Mark Bowden
Karen Brinck
Amanda Brooks
John & Anne Brown
George & Myrna Burg
Bob & Jenny Bye
Amy Callaghan
Jay & Jean Chesterman *
Brianna Chicoine
Jessica Chicoine-Honomichl
Don Claeys
Thorpe & Joann Clark
Jon & Anne Cleghorn
Jennifer Clay
Bill & Sue Conner
Jack & Phyllis Conner
Chuck & Lisa Corbett
Tricia Currans-Sheehan
Dave & Arlene Curry
Kristine Danner
Sam & Mickey Darrough
John Day
James & Nelma DeBauche
Lisa DeLance
Tim & Mary Duax
Pam Eliason
Jim & Becky Eckhardt
Michael & Carolyn Ellwanger
Margo El-Zeini
Ron & Gia Emory
Amber & Kent Ernster
Miranda, Leroy & Raiven Everett
Gary & Carol Fethke
Donald & Kathy Foster
Emilee Foster
Marilyn Foster
Steve Frank
Curt & Rachel Fredericksen
Mike & Katie Gecewich
Andrew & Gabriella Galinsky
Cara Geerlings
Bob & Phyllis Gillespie
Tom Gilsenan
Kathleen Golden
Missy & Jason Gomez
Gretchen Gondek
Jim & Jacquelin Grabouski
Harry & Tina Gray
John & Di Gray
Roger & Linda Gunn
Rob & Carol Hardy
Chris Jensen & Beth Harms
Dr. Jim Hartje
Kelli Heilbuth

Leslie Hershkowitz
Emma Hewitt
Michael & Sharon Hobart
Ruth Holder
Karol Holton Family
Bruce & Jeanette Hopkins
Pat Hubbard
Terry & Carol Hudson
Mercedes Ivener
Serra Lesa Ivener
Terry & Teresa Ivener
Carleton & Joan Jackson
DeAnna Jensen
Vibeke Jensen
Mark & Kay Jensen
Andrea & Wayne Johnson
David & Leah Johnson
Tammy Johnson
Matthew & Apryl Johnson
Lynn & Jim Johnson
Kelly Johnston
Larry & Margee Joines
Lucinda Kafton
Paul & Suzi Kaiman
Gwen Kandt
Tom & Holly Kenny
Charles & Shari Kiple
Jayne & Tammy Kirsch
Kevin & Terri Kjeldseth *
Tom & Sarah Kleber
Gordon & Jane Krough
Jack & Carrie Lammers
Lorne & Gail Lane
Vanessa Larned
Richard Levich
Dr. Joe & Sheila Liewer
William Lieb
Erik & Sara Loe
Connie Luhman
Michelle Lukken
Susan Macfarlane
Amy Machan
Stee Maxwell
Abby McCoid
Mike & Mary McGowan
Page McDermott
Alan & Terri McGaffin
Charles & Rebecca McKenny
Mike & Ann McTaggart
Todd & Michele Mechling
Roger & Cindy Meier
Claire Miethke
Mike & Colette Morrison
Charles & Pam Mostek
Stan & Mary Munger
Steph Nesser
Brad & Lisa Newton *
Dave Nitzschke
Beth Noel
Sharon Oldroyd
Melanie & Roy Olsen
Jane & Brent Olson
Lisa Osborn *
Emily & George Owings
Jerry & Rae Palmer
Staci Page
Scott & Cyndy Patten
Kristin Pauls
Teresa Payer

Robert & Julie Perryman
Ken & Robin Peterson
Michael & Helena Potash
Sarah Powell
Carol & Jerry Probst
Latha Raghavan
Gary & Carol Ratcliff
Sadie Reifenrath
Tom & Cindy Roberts
Paul Rosenbaum
Rex & Maria Rundquist
Bob & Sandra Sabel
Frances Sadden
Maita Sadoff
Patrick & Catherine Saulsbury
Kathleen Saxe
Dr. Donald & Mary K. Schenk
Jennifer Schulz
Larry & Pauline Sensenig
Elaine Seubert
Jim & Rosemary Sheehan
Jo Shore
Edward & Jane Sibley
Jody & Gina Sitzmann
Melinda Sitzman
Art & Eileen Silva
Steve & Linda Smith
Scott & Mary Jo Smith
Jim & Amy Sobaski
Chaia Speck
James Stanfield
Ed & Rhea Steck
Dr. Richard Steinbach
Scott & Diane Stevenson
Sheryl Stokesbary
Thor & Karin Swanson
Jeni Thompson
Matt & Amy Thompson
Mark Lindner & Sara Thompson
April Tidwell
Joni Todd
Nayibe Torres
Lee Ann Tremayne
Peter Turcotte & Richard Randall
Tonya Vakulskas
Terry & Laura Vaughan
Lee & Ruth Van Voorhis
James & Alice Villone
Lesley Vlaanderen
Joel & Wendy Vohs
Mark Vos
Angie Votek
Kent & Collene Vriezelaar *
Rhonda Wadzinski
Beckie Wahlberg
Steve & Mary Warnstadt
Lisa Wagner
Norman & Cathy Washburn
Erin Webber-Dreeszen
Tom & Ruth Weekes
Lewis & Renee Weinberg
Sarah Wheelock
John & Christie Whalen
Nan Wilson
Bill & Judy Welu
Gary & Nancy Wenell
Thomas & Jody Wentle
Jim & Bev Wharton
Joseph & Betty Ann Wiedemeier

Larry & Becky Williams
Robert & Mary Lee Wise
Ken & Mei Zhou

Individual

Paul Adamson
Kathy Addison
Joanne Alberda
James Bisenius
Kira Bliss
Hayley Boever
Judy Boyle
Randy Bradley
Jill I. Collins
Sean Conrad
Deb Coppel
Lynn Corrie
Anne Cowley
Nanette Day
Reed Donaldson
Willard Fish
Irene Fisher
Amy Foltz
Janet Goodrich
Thomas Gary
Lance Hankins
Jean Hardie
Ann Hill
Craig Johnson
Patricia Kirkegaard
Calvin Marcoe
Carlene Marksbury
Tad Maxwell
Sheryl McGowan
Benny Melton
Laura Mesz
Bruce Miller
Kerry Moody
Russell Movall
Pam Oban
Cheryl Oldenkamp
Jennifer O'Mara
Kathy Petrie
Patricia Probasco
Sherry Ratcliff
Sally Reinert
Deb Ridders
Jo Rizk
Susie Rodriguez
Emma Rooney
Beth Schilchte
Shayna Skokan
Elizabeth "Anne" Smith
Jane Sokolovske
Karen Stein
Donna Tindall
Mary Ann Tordsen
Lucinda Tryon
Alison Uhl
Susan Verschoor-Fey
James Villim
Jane Vogel
Dorothy Walker
Mrs. Mose Yanney
Raleigh Zucker

Senior

Kathleen Audus
Arlene Baldes

Jack & Helene Berg
Hope Benton
Donna Schirck-Bergeson
Marvin & Zena Berenstein
Edwin Blackburn
Grete Bodogaard
Nancy Boysen
Nancy Bricker
Lillian Brodkey
Brendan & Martha Burchard
James Burnett
Darlene Burson
Katherine Calhoun
Ted & Jo Carlson
Dan & Coleen Chapman
Bob & Jean Clem
Audrey Cornish
Anne Danielson
Thomas & Janice DeWitte
Ginny Duncan
Mary Elder
Noreen Esklidsen
Gene & Alice File
Doug Flom & Linda Peete-Flom
Jay Gelfand
Donna Goodwin
Mary Groda-Lewis
Gary & Betty Gunderson
Ron & Rima Hartman
Dr. Susan Hatfield
Beverly Hinds
Ona Iverson
Carl & Anne James
Chuck Jenkins
Harland & Jeanette Johnson
Katie Johann
Bonnie Jonas
Les & Shirley Juon
Ellsworth & Janet Kalas
Sandra Kangal
Mina Karcher
Mona Kelly
Robert & Marilyn Kilbride
Jean King
Jean Klopstad
Jane Knutson
Ray & Barbara Krigsten
Lillian Kulick
Reinert Kvidal
Margaret Ann Lennon
Marcia Levin
Thomas & Camille Lydon
Mary Macomber
Betty Mahr
John & Alice Marley
Daisy Margeas
Harriet Marsh
Helen Logan Maxwell
Maureen McKenna
Bob & Nancy McIntosh
Jo Michaelson
Vivian Miller
Ms. Marty Nash
Dan Nelson
Jeannie Nemmers
Mary Ness
Marsha Newman
Roy Nickum
Charlie Noltze

Lynn Nordsiden
Garneth Oostenink
Carole & Joe Parrinello
John & Carol Pemberton
Roberta Pendleton
Bettina Perkins
Marti & Chuck Peterson
Don Phipps
Phyllis Powell
Betty Pratt
Franklin & Marit Pudas
Lou Roach
Beverly Rosenkrans
Jerry & Pat Ruba
Donald Sappingfield
Molly Sarff
Aurelia Scott
Bill & Kay Shelly
Sue Siedschlag
Marjorie Skokan
Beverly Smith
Carol Spellman
Eileen Stickels
Pat Stine
Curtis Stoever
Jacque Sweet
Ann Trudo
Judie Uhlir
Gilbert Vaughan
James & Lois Walsh
Michael & Mary Walsh
Lynne Wetzel
Edith Zahniser
Midge Zimmerman

Student

Patty Bennett
Sarahann Bradley
Liz Corrie
Margaret Delaney
Phillipa James
Jolie Farley-Wamberg
Lisa Wojcik
Klaire Pearson
Pyper Perez

Bold – New memberships
Italics – Upgraded memberships
* Association Board Member affiliation
● Art Center Trustee affiliation

ARTSPASH: THANKS TO OUR 2011 SPONSORS

Naming Sponsors

Alorica
Argosy Casino
Buy Fresh, Buy Local
Casey's General Stores
Central Bank
Deal Garden
Weinberg Investments

Media Partners

CableOne
KCAU
KG95 - Z-98 - KISS 107FM -
KMNS - KWSL
KMEG - KPTH Fox 44
KTIV
KWIT-KOJI FM90
NEW 102.3, KSCJ, KSUX 105.7,
Kool 99.5, Y101.3
Sioux City Journal
Siouxland Magazine

Masterpiece

Artisan Press
Caturra Coffee Roasting Co.
Chesterman's Co.
FASTFRAME
Holiday Inn Downtown
Hy-Vee
K & B Transportation
Kjeldseth Design
Mercy Medical Center
Poulson Advertising
St. Luke's Health Systems
Thompson Electric
WineStyles

Work of Art

Buffalo Alice
Great West Casualty Company
Klinger Companies, Inc.
Matney's Colonial Manor, SSC
MidAmerican Energy
Novelty Machine & Supply Co.
Sioux City Community Theatre
Sign Pros
Sioux City Farmers Market
Spot - A - Pot Inc.
Stan Houston Equipment
Staples Promotional Products
State Steel
T & W Tire
Wells Fargo Bank

Sketch

Arctic Ice
BPI Technology Inc.

City of Sioux City Convention Center
De De Beverage
Fareway
First American Bank
Gerkin Windows and Doors
Morningside Little League
Office Systems Company
Perkins Family Restaurants
Point of View Photography
River City Amusement
Sapp Bros.
Tegra Corporation
Tyson Events Center

Study

Aramark
Brokers Alliance Inc.
Chik-fil-A
City of Sioux City Department of
Parks & Rec
Da Kao
Diamond Thai
Downtown Partners
Farrell's Heating and Air Conditioning, Inc.
Hitches Trailers & More
Interstate Mechanical Corp.
Iowa-Nebraska State Bank
La Juanita's
Pickerman's Soup and Sandwich
Record Printing
Sergeant Bluff Dental, PLLC
Sioux City Musketeers
South Sioux Animal Hospital, PC
Van Osdel Plastering & Drywall, Inc.

Community Partners

Barbara & Jack Aalfs
Ross & Kim Bacon
Wayne & Joyce Barnes
Frank & Sandi Baron
Margie & Mike Bennett
Barbara Benson
Patricia Bortscheller
Nancy Boysen
Jack & Janice Bristow
Lillian Brodkey
Mike & Linda Cadwell
Don Claeys
Judy Clayton
Jon & Anne Cleghorn
Bill & Lyn Edmonds
Galen & Carlene Gehrts
Luanne & Joe Giesler
Nancy Giles
Helen & Milt Glazer
Janet Goodrich
Bethany Manning & Steven Gordon, M.D.

Edith Greenstone
Dan & Sally Hartley
Michele Haupt
Thom & Julie Humbert
Carl & Anne James
Mel & Valma Janicek
Tigger & Irving Jensen
Mark & Kay Jensen
Ardys Johnson
Sandra Kangal
Charlotte Kock
Gordon & Jane Krogh
Herbert & Rosemary Kuehne
Louetta Lipshutz
Gene & Camille Lydon
Shawn McCoy
Gerald & Sheryl McGowan
Ronald McManamy
Russell Movall
Dave & Nick Nitzschke
Sharon Ocker
David & Joan Paulsrud
Skip & Cathy Perley
Louise Persinger
Don Phipps
Thomas & Glenda Plaza
Joanie Rizk
Jim & Fern Rocklin
Maita Sadoff
Elaine Seubert
Sid & Linda Shoemaker
Steve & Marcia Shook
State Steel
Frank Cal Tenuta
David & Marly Van Berkum
Dennis & Kathleen Weisz
Anita Wendt
Jim & Bev Wharton

**Art Center Association of Sioux City
2011-2012**

Sheri Lund, President
Carlos G. Rodriguez, Vice President
John Wagner, 2nd Vice President/Secretary
Mike Nagel, Treasurer
Jay Chesterman, Past President

Stacie Anderson
Joyce Barnes
Greg Berenstein
Luanne Gjelser
Helen Glazer
Dolores Guest
Mary Ellen Hartman
Chris Holman
Paula Jacobsen
Mari Kaptain-Dahlen
Kevin Kjeldseth
Lisa Leopold
Shannon Liddell
Laurie Mills
Lisa Newton
Dr. Carol Roge
Emma Rooney
Mary Sterk
Mindy Stevens
Suzan Stewart
Laura Troth
Joe Twidwell
Kent Vriezelaar

Distinguished Members

Leslie Bebee
Sandy Ellis
Helen Glazer
Milt Glazer

Junior League Liaison

Angela Ericson

Sculpt Siouxland Liaison

Lisa Kalaher

Board of Trustees

2012
Jeff Baldus, Chair
Diane Werth, Vice Chair

Gregory Jones
Steve Kammerer
Dwight Packard
Doug Palmer
James Yanney

City Council

Bob Scott, Mayor
John Fitch, Mayor Pro-Tem
Rhonda Capron
Tom Padgett
Keith Radig

Paul A. Eckert, City Manager

Art Center Staff

Al Harris-Fernandez, Art Center Director
Sandi Baron, Visitor Services
Deb Bell, Custodian
Todd Behrens, Curator
Dave Brienzo, Custodian
Jenny Bye, Studio Program Coordinator
Lynn Foster, Visitor Services/Membership Secretary
Regis Garvey, Development Coordinator
Roy Hullinger, Custodian
Lyle Listamann, Publications Coordinator
Alice A. Marley, Education Liaison
Debra Marqusee, Education Aide
Shannon Sargent, Exhibitions/Collections Coordinator
Mary Sexton, Visitor Services
Mary Vaught, Visitor Services
Lisa Verschoor-Matney, ArtSplash Coordinator
Erin Webber-Dreeszen, Development Associate
Kjersten Welch, Administrative Secretary



art center's ArtSplash



Artist Choose Artists Reception



Youth Art Month Reception

