

ANNUAL REPORT

July 1, 2007 - June 30, 2008



The Sioux City Art Center is a model public/private partnership between the City of Sioux City and the Art Center Association of Sioux City, with each contributing approximately one-half of the Art Center's annual operating budget. The Art Center, through its non-profit fundraising arm, leverages a dollar in private donations for each tax dollar it receives. Without this model partnership, the Sioux City Art Center could not achieve the quality programs and services that it provides our community and region.

In addition to directly serving some 65,000 plus annual visitors through its exhibition and education programs and ArtSplash, Festival of the Arts, the Art Center also plays an important role in our economy. As a symbol of our community's commitment to the quality of life, the Art Center is used as an example when businesses recruit professionals and organizations recruit new businesses.

As part of our commitment to both serving and promoting our community, the Art Center adopted the following vision statement as part of its *2006 – 2010 Strategic Plan: The Sioux City Art Center will raise the visibility of the Art Center and City by featuring major exhibitions, and building its permanent collection to include important art with significant links to the region, and utilizing its collection to create a valued educational resource.*

In 2006 and 2007 the Art Center began working on implementing this vision through a new Blockbuster Partnership committed to continuing to bring in major traveling exhibitions and allocating funds for collecting through the Legacy Collection. In addition, the Art Center Association committed funds for the new collecting effort through the Margaret Heffernan Acquisition Fund and the Unnamed Foundation. Then in early FY 2007/2008 the Art Center received a grant of \$100,000 from the M. A.

Martin Everist Foundation to connect the collecting initiative with the vision of creating a regional educational resource. The result is the Margaret Ann Martin Everist Permanent Collection Gallery and Educational Initiative.

Phase One of the Educational Initiative was launched in July 2008 with a long-term exhibition of selected works from the Permanent Collection arranged in historical periods and movements and supported with free educational materials on the periods and movements, as well as on individual artists featured in the exhibition.

In addition, the exhibition is supported with a new study area adjacent to the exhibition gallery, featuring a non-circulating library of books and catalogs related to the Collection. Future phases of the Margaret Ann Martin Everist Educational Initiative are being developed and will be implemented during the next year, including a computer kiosk providing visitors with access to additional works in the Collection and a gallery lecture series. Additional plans include collaborating with area educators to produce educational materials on the Collection for use in the classroom and providing a visiting lecture program to area schools.

While the Legacy Collection program and the Margaret Ann Martin Everist Permanent Collection Gallery and Educational Initiative were new, during the FY2007/2008, the Art Center also continued its commitment to bringing in major traveling exhibitions and commissioning site-specific artworks, while also featuring area artists. The Blockbuster Partnership sponsored the fifth major traveling exhibition in six years by underwriting *Marilyn Monroe: Life as a Legend*. The popular exhibition on the iconic film star featured documentary photographs, as well as artwork by well-known artists from the United States, Europe and China.

Our new site-specific installation program started with the popular *Twigamore* by Patrick Dougherty in 2006 continued with the opening in January 2008 of *Resplendent Reconnaissance: a site-specific installation by Liz Miller*, on temporary exhibition in the T. S. Martin Atrium.

Area artists featured in the exhibition program included solo exhibitions by Paul Chelstad and Ann McTaggart, with future exhibitions scheduled for Terri Parish McGaffin, Mark Kochen, and Nan Wilson.

While these are some of the highlights of the last fiscal year, they are just part of the many activities offered by the Sioux City Art Center, as you will see as you look through the following Annual Report.

Last but not least, I want to acknowledge and thank the Mayor and members of the City Council of Sioux City for their continuing support of the Art Center. I also want to thank and acknowledge the Board of Trustees and the Art Center Association of Sioux City's Board of Directors for their volunteer service and efforts on behalf of the Art Center.

The Sioux City Art Center is truly a model public/private partnership.

Al Harris-Fernandez
Art Center Director

EXHIBITIONS

There were 17 exhibitions, including a year-long exhibition in the Permanent Collection gallery of the *Honoring Our Legends* 10th anniversary celebration; two exhibitions and a screening series ran in the T.S. Martin Atrium.

This exhibition program included: two exhibitions of work by living, local artists and a retrospective survey of Ary Stillman; a group show of works borrowed from local collectors' private collections; an exhibition of photographs produced by youths in collaboration with the Sioux City Camera Club; five shows produced from the Permanent Collection; and the final exhibition in the Blockbuster I series.

TEMPORARY EXHIBITIONS

– August 15, 2007

[ICOTE Green Chairs Competition](#)

This traveling exhibition featured chairs made out of recycled materials.

– September 9, 2007

[Shootout](#)

This exhibition was a collaborative effort with the Sioux City Camera Club and featured works by young people who were mentored by members of the Camera Club.

– September 9, 2007

[Regionalism:](#)

[Selections from the Permanent Collection](#)

This exhibition featured Regionalist and related artwork from the Art Center's Permanent Collection.



Stencils—Paul Chelstad

September 29 – November 25, 2007

[Marilyn Monroe: Life as a Legend](#)

The fifth blockbuster exhibition, this traveling exhibition combined the most well known images of the star by a wide variety of photographers.

December 1, 2007 – February 17, 2008

[Élan Vital:](#)

[Recent Paintings by Ann McTaggart](#)

An exhibition of recent work by local painter Ann McTaggart.

December 15, 2007 – February 16, 2008

[Approaching Landscape:](#)

[Selections from the Permanent Collection](#)

A selection of approaches to painting the landscape ranging from abstract to photographic.

December 21, 2007 – March 22, 2008

[Sioux City Collects](#)

This exhibition presented a survey of abstract art held in local, private collections. It included works from these collections: Jeff Baldus, Jack and Gail Bernstein, Helen and Milt Glazer, Ritch LeGrand, Dennis Mahr, and Jerry Stroup.

– January 12, 2008

[Honoring Our Legends:](#)

[Selections from the Permanent Collection](#)

As part of the Art Center's 10th anniversary of the new facility, this exhibition featured work donated by, or in honor of, four major supporters of the Art Center: Margaret Ann Martin Everist, William T. Dible, Dr. Fredrick Stark, and Margaret Heffernan.

March 1 – April 13, 2008

[Youth Art Exhibition:](#)

[Art by High School Students](#)

An annual juried exhibition features works by area students. This year's exhibition featured artwork by high school students.

March 15 – June 15, 2008

[The Alchemy of Light:](#)

[The Art of Ary Stillman](#)

Guest curated by James Wechsler
A retrospective of one-time Sioux City resident Ary Stillman's work. Organized by the Stillman/Lack Foundation as a reintroduction of Ary's work to a broad public.



Marilyn Monroe: Life as a Legend



Resplendent Reconnaissance: a site-specific installation by Liz Miller

March 29 – July 6, 2008

Stencils—Paul Chelstad

A historical survey of stencil work by local artist Paul Chelstad, including a new stencil prepared specifically for the exhibit.

April 19 – June 29, 2008

The Legacy Collection: Works by Paul Aho, Stephen Dinsmore, and Larry Schwarm

This exhibition featured works being considered for purchase for the Legacy Collection.

April 27 – July 27, 2008

Windows: a portfolio by Pierre Alechinsky

This exhibition was the first presentation of a seven-part portfolio of work received as a gift in 1979.

June 28 – October 5, 2008

The Head Show

This Permanent Collection exhibit of portraits, self-portraits, heads, busts and imaginary faces drawn from the Permanent Collection and featuring works not previously exhibited.

Moving Images

This screening series showed a single artist on continuous play for a period of approximately two months. It included surveys of major work by internationally prominent artists:

July 1 – August 31, 2007

Dennis H. Miller

September 1 – October;
November – December 31, 2007

Erik Olofsen (split due to video for Blockbuster exhibition)

January 1 – February 29, 2008

Jud Yalkut

March 1 – April 30, 2008

Robbie Land

May 1 – June 30, 2008

Roger Deutsch

ONGOING EXHIBITONS

Grant Wood's Corn Room mural

This ongoing exhibition features supporting prints and a mural created by Grant Wood in 1927 for the former Martin Hotel of Sioux City.

January 12, 2007 –

Resplendent Reconnaissance: a site-specific installation by Liz Miller

A site-specific construction in felt and plastic, commissioned for the T.S. Martin Atrium.

GUEST CURATORS

James Wechsler, curator, *The Alchemy of Light: The Art of Art Stillman*

LOCAL ARTISTS

Ann McTaggart
Paul Chelstad
Ary Stillman

EXHIBITION PUBLICATIONS

Brochures

(8 total)

- Regionalism: Selected Works from the Permanent Collection*
- Shootout: A Community-Wide Photography Project*
- Marilyn Monroe: Life as a Legend*
- Élan Vital: Recent Paintings by Ann McTaggart*
- Stencils—Paul Chelstad*
- Resplendent Reconnaissance: a site-specific installation by Liz Miller*
- The Alchemy of Light: The Art of Art Stillman*
- The Legacy Collection: Art by Paul Aho, Stephen Dinsmore, and Larry Schwarm*

Permanent Collection Informational Brochures

(29 total)

- Paul Aho
- Pierre Alechinsky
- Thomas Hart Benton
- Guilio di Antonio Bonasone
- Paul Chelstad
- Stephen Dinsmore
- Patrick Dougherty
- Dennis Dykema
- Sharon Engelstein
- Corita Kent
- Käthe Kollwitz
- Bernard de Hoog
- Dan Howard
- Oscar Howe
- George Inness
- Keith Jacobshagen
- Jin Lee
- Charles Logasa
- Gladys Lux
- Karl Mattern
- Mark Peiser
- Giovanni Battista Piranesi
- Walter Quirt
- Hermann Saffleven the Younger
- Larry Schwarm
- Ary Stillman
- Victor Vasarely
- James McNeill Whistler
- Alexander Helwig Wyant

ACCESSIONS TO THE PERMANENT COLLECTION

PAUL CHELSTAD

Andy Warhol, 2008
Ultra black spray paint on watercolor paper
Sioux City Art Center Commission
2008.08

Ann Margaret, 2008
Ultra black spray paint on watercolor paper
Sioux City Art Center Commission
2008.09

Astronaut, 2008
Ultra black spray paint on watercolor paper
Sioux City Art Center Commission
2008.10

Dalai Lama, 2008
Ultra black spray paint on watercolor paper
Sioux City Art Center Commission
2008.11

Double Pyramid, 2005
Enamel on steel
Gift of Eldon and Regina Roth
2008.04

Edie, 2008
Ultra black spray paint on watercolor paper
Sioux City Art Center Commission
2008.12

Einstein, 2008
Ultra black spray paint on watercolor paper
Sioux City Art Center Commission
2008.13

Elizabeth Taylor, 2008
Ultra black spray paint on watercolor paper
Sioux City Art Center Commission
2008.14

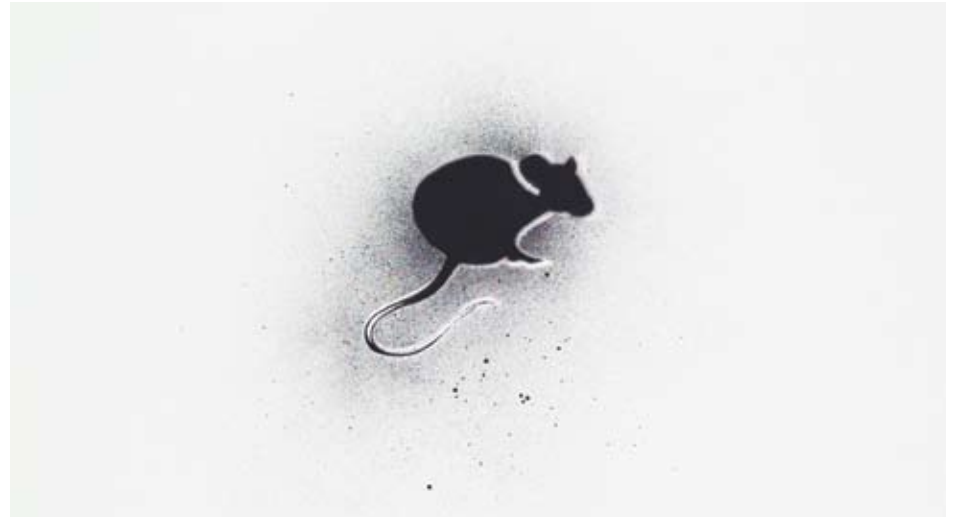
Fred Astaire, 2008
Ultra black spray paint on watercolor paper
Sioux City Art Center Commission
2008.15

Martin Luther King, Jr., 2008
Ultra black spray paint on watercolor paper
Sioux City Art Center Commission
2008.16

Rat, 2008
Ultra black spray paint on watercolor paper
Sioux City Art Center Commission
2008.17

Ronald Reagan, 2008
Ultra black spray paint on watercolor paper
Sioux City Art Center Commission
2008.18

Ronald Reagan, 1982-86
Spray paint on card stock
Gift of the artist
2008.04



Paul Chelstad, *Rat*, Ultra black spray paint on watercolor paper
Sioux City Art Center Commission; 2008.17

Ronald Reagan, 1982 – 86
Spray paint on card stock
Gift of the artist
2008.05

The Running Couple, 2008
Ultra black spray paint on watercolor paper
2008.20

Sherman Craig Brooks, 2008
Ultra black spray paint on watercolor paper
Sioux City Art Center Commission
2008.19

The Smoking Hand, 2008
Ultra black spray paint on watercolor paper
Sioux City Art Center Commission
2008.21

Statue of Liberty, 2008
Ultra black spray paint on watercolor paper
Sioux City Art Center Commission
2008.22

Stone Park Stones, 2008
Ultra black spray paint on watercolor paper
Sioux City Art Center Commission
2008.07

JOHN GORDON

Round Barn in LeMars, Iowa, c. 1978
Oil on board
Gift of John and Carol Valdrighi
2008.03

JANET KENT

The Blue Optimist
Print
2007 Print Club of Cleveland
Subscription Print
2008.23

GLADYS LUX

Untitled, 1925
Oil on canvas
Purchased with funds provided
by the Alan Fredregill Fund
2008.01

TERRI PARISH MCGAFFIN

Gate, 2006
Gift of the artist
2008.02

CHERYL WARRICK

Peace Makes Plenty
Print
2008 Print Club of Cleveland
Subscription Print
2008.24

EDUCATION

CLASSES, WORKSHOPS AND PROGRAMS

Classes and Workshops

During the year's four seasonal semesters, there were 98 adult and children classes and workshops serving approximately 1,200 students, for a total of 6,583 teacher-student contact hours.



ArtCamp '07

Education Gallery

The William T. Dible Hallway and the Metz Education Hallway on the second floor have been designated as spaces for hanging artwork created by students and faculty during the time they attend classes at the Art Center. The exhibitions change approximately every three months.

- July– September, 2007
ArtCamp'07 Exhibition
- October – December, 2007
Watercolor Student Exhibition
- January – March, 2008
Pastel, Watercolor and Acrylic Student Exhibition
- April - June, 2008
Student Drawing Exhibition

Docent Program

Our team of twelve dedicated volunteer docents consistently attended special informative and educational tours given at the beginning of every exhibition by the director, curator and myself. We are pleased to welcome three volunteers who are training to become docents: Charlotte

Cockburn, Vivian Miller and Kathy Muga. We are extremely grateful to the docents for conducting 96 tours, serving 2,235 children and adults. Included in these numbers is the ARTWORKS program serving fifth-grade students who receive free busing, a guided tour and an opportunity to create a piece of art based on the artwork seen during their visit.

ArtCamp '07

This is the fourth year that the Art Center hosted the popular Summer ArtCamp for children ages 6 – 12. The five, two-week sessions of half- and full-day classes served 130 children. ArtCamp'07 culminated in an exhibition and reception in the Education Gallery during the months of August and September. A collaborative project with the Sioux City Journal was the painting of newspaper racks. The stands were distributed throughout the community.

Artist in Residence '07

The Art Center re-organized its annual artist-in-residence program. Instead of attending an eight- to ten-week class in the spring with one artist/instructor, talented high schools students worked with five teachers in three-day summer workshops. In June 2007, 23 high school students participated in the program entitled, Serious Art for Serious Artists: Summer Workshops for Teens which continued through July 2007. An exhibition of the student's artwork ran from July through September.

Holiday Gift-Making Workshops

A special series of Holiday Gift-Making Workshops featured 16 arts and craft projects directed by eight teachers. These workshops were offered on two Saturdays, December 1 & 8, 2007 free to the public with 150 people attending

River of Words

During the month of January, 2008, 36 children participated in River of Words: International Poetry and Art Contest by coming four Saturdays to create paintings and write poems about the "waters of our area". We were fortunate to have been very successful on the National level with an award going to eleven year Lupita Delgado for her art piece "Foxy". On the state level, many children won: 11 art

awards and 3 poetry awards. A "Special Recognition" for our innovative program was also awarded to the instructors. All the winning work will be included in an exhibition at Cedar Rapids Museum of Art in July of 2008. The same exhibition was shown at the Sioux City art Center in October 2008.

Youth Art Month

In March of 2008 and in celebration of Youth Art Month, the Sioux City Art Center held its 19th Annual Juried Youth Art Exhibition, High School, 2008. The exhibition featured fifty-seven works of art created by students in 9th, 10th, 11th, and 12th grades from seventeen high schools in the Siouxland area. The exhibition was juried by Catherine Ferguson, sculptor and installation artist from Omaha, Nebraska.

Spring Workshops

Eggs-pressions Workshops helped welcome in Spring to the Art Center on Saturday, March 22, 2008. Four (egg related) workshops enabled approximately 100 children and their parents a chance to be extremely creative.

Artful Birthday Parties

Our teachers helped celebrate 20 Artful Birthdays during the past twelve months by providing interesting and fun art projects for the birthday child and their guests, approximately 250 persons in all.

The Junior League Hands-On! Gallery

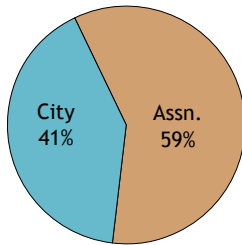
This interactive gallery continues to be a popular interactive destination for children when visiting the Art Center. The Art Center, in partnership with the Junior League of Sioux City, is upgrading new stations to keep the Hands On! Gallery fresh.

Community Requested Classes and Workshops

Mary Treglia Center summer workshops; New Perspectives workshops; Girl Scout workshops ; Cub Scout Workshops; D.A.R.E. Lock-In Workshops; The Alzheimer Association workshops; Siouxland Friends and Neighbors Preschool workshop; Mothers of Preschool (MOPS) workshops; Home School classes; Public Schools Pinwheels for Peace for a second year; and Goodwill Industries, series of three workshops.

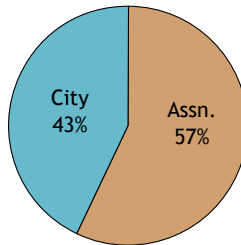
BUDGET SUMMARY

The Sioux City Art Center is a public/private partnership between the City of Sioux City and the Art Center Association of Sioux City.



2007/2008
\$ 662,281
969,256
\$1,631,537

City of Sioux City Appropriation
Art Center Assn. of Sioux City Support
TOTAL



2006/2007
\$ 581,912
776,305
\$1,358,217

CITY OF SIOUX CITY FINANCIAL REPORT

	2007/2008	2006/2007
Employees	\$533,071	\$469,406
Supplies and Services	39,181	14,118
Repairs and Improvements	33,064	39,075
Utilities	56,965	59,313
TOTAL	\$662,281	\$581,912

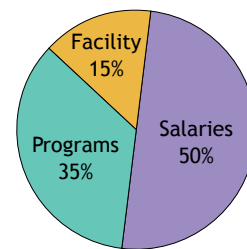
THE ART CENTER ASSOCIATION OF SIOUX CITY STATEMENT OF ACTIVITY

YEAR ENDED JUNE 30, 2008
WITH SUMMARIZED FINANCIAL INFORMATION FOR YEAR ENDED JUNE 30, 2007

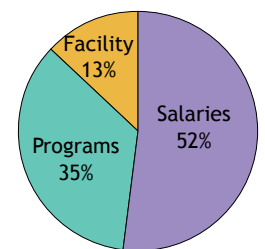
	Unrestricted	Temporarily Restricted	Permanently Restricted	2008	Total 2007
Public Support and Revenue:					
Support:					
Contributions	\$ 160,894	\$ 31,108	\$	\$ 192,002	\$ 44,498
Blockbuster Partnerships		92,340		92,340	193,353
Grants	10,000	121,000		131,000	45,321
Memberships	69,745			69,745	51,509
Noncash Contributions	71,633			71,633	56,204
	312,272	244,448	0	556,720	390,885
Revenue:					
ArtSplash Sales and Registration Fees	132,057			132,057	104,932
Education Income and Underwriting	55,866			55,866	46,266
Exhibition Entry Fees and Underwriting	22,357			22,357	19,344
Investment Income	137,127	9,176		146,303	112,279
Special Events	48,234			48,234	78,939
Other Income, Net	7,719			7,719	23,660
	403,360	9,176	0	412,536	385,420
Net Assets Released from Restrictions:					
Satisfaction of Restrictions	121,044	(121,044)		0	0
Total Public Support and Revenue	836,676	132,580	0	969,256	776,305
Expenses:					
Program Services	606,252			606,252	526,385
Supporting Services	76,652			76,652	58,975
Fundraising	16,241			16,241	30,247
Total Expenses	699,145	0	0	699,145	615,607
Change in Net Assets from Operations	137,531	132,580	0	270,111	160,698
Contribution for Purchase of Annex				0	300,065
Contributions for Long-Term Investment			5,000	5,000	5,000
Gain (Loss) on Investments	(265,736)	(15,685)		(281,421)	273,233
Change in Net Assets	(128,205)	116,895	5,000	(6,310)	738,996
Net Assets - Beginning of Year	1,970,356	438,524	1,417,970	3,826,850	3,087,854
Net Assets - End of Year	\$1,842,151	\$555,419	\$1,422,970	\$3,820,540	\$3,826,850

A COPY OF COMPLETE AUDIT INFORMATION MAY BE OBTAINED FROM THE SIOUX CITY ART CENTER.

Sioux City Art Center Expenses

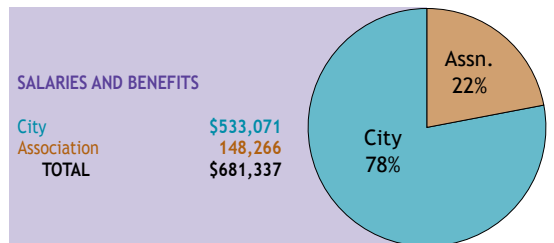


2007/2008
\$ 681,337
474,227
205,862
\$1,361,426

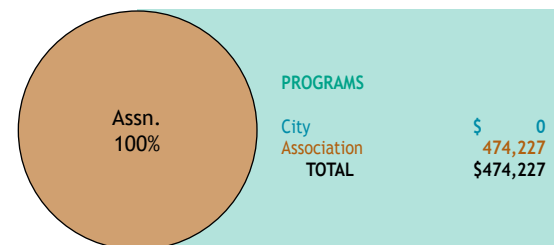


2006/2007
\$ 627,402
415,906
154,211
\$1,197,519

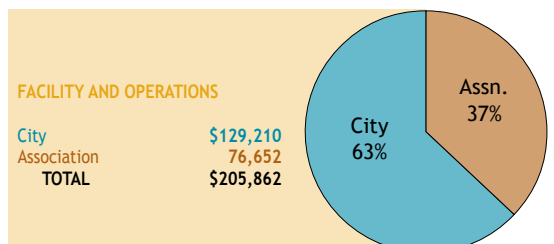
2007/2008



SALARIES AND BENEFITS
City \$533,071
Association 148,266
TOTAL \$681,337



PROGRAMS
City \$0
Association 474,227
TOTAL \$474,227



FACILITY AND OPERATIONS
City \$129,210
Association 76,652
TOTAL \$205,862

Attendance

- Gallery..... 34,161 counted
- ArtSplash 30,000+ estimated
- Public Art 25,000+ estimated

Volunteer Hours

- Art Center..... 979 counted
- ArtSplash 5,403 estimated

Tours

- Artworks..... 34 (serving 854 fifth grade students)
- Other tours..... 71 (serving 1,582 individuals)

- Members.....672
- Business 34
- Blockbuster Partners 22

- Exhibitions 21
- Lectures/Gallery Talks 8
- Public Programs 11
- Gift Shop Exhibitions 1

- Classes..... 98
- Students..... 1,739
- Contact hours..... 15,881

- Docents (dedicated volunteers) 13

DEVELOPMENT

BLOCKBUSTER II PARTNERS

Founder

Avery Brothers Sign Company
Gardner Foundation •
Powell Broadcasting
Sioux City Journal

Patron

KTIV – News Channel 4
Irving, Jr. & Carolyn Jensen •
Drs. Allan S. Manalan & Diane K. Werth
Security National Bank •
Wilson Trailer Company

Investor

BPI Technology, Inc.
Vantus Bank •
Klinger Companies, Inc.

Sponsor

Anonymous

Contributor

Eunice Acker and Donnin Custer *
Richard Brown, Jr. and Aaron Beutler •
Chesterman Company •
Rick and Regis Garvey
Innovative Benefit Consultants –
Stuart Lee •
Mercy Medical Center •
Tegra Corporation *
Thompson Electric/Electric Innovations
Wells Fargo •

- Association Board Member
- * Art Center Trustee

2007-2008 BUSINESS PARTNERS

Grant Wood

Argosy Casino – Sioux City
M Plus Architects, Inc.
Nutra Flo Company

Corita Kent

First American Bank
Gunderson's
Iowa-Nebraska State Bank
L & L Builders Company
Overhead Door Company •
Poulson Advertising •

Oscar Howe

Cannon Moss Brygger & Associates, PC
Dakota Dunes/North Sioux City Times
Great West Casualty Company
Jim's Lounge
McClintock Insurance, Inc. *
Perry Creek Animal Hospital •
Whiskey Creek Pottery *

Ary Stillman

ABC Bookkeeping & Tax Services
Adkins Tax Service
Body & Soul Salon
Book People
Dakota Dunes Development Company
Davenport Cleaners
Downtown Partners
Gallery One
Heidman Law Firm •
Henry Homes 'n More, Inc.
June E. Nylen Cancer Center
Kollman Appliance
Office Systems Company
Pinnacle Bank
Rick & Co. Day Spa & Salon
Siouxland Federal Credit Union
Vakulskas Law Firm
Charlie Zook Motors

- Association Board Member
- * Art Center Trustee

ANNUAL MEETING RECOGNITIONS

Patrons of the Year

Barbara & Jack Aalfs
Honored for their support of providing on an annual basis underwriting for exhibitions and gifts designated for the Association's endowment.

Outstanding Association Board Members

Joyce Barnes
Shannon Liddell
Jerry Stroup
Recognized for their distinguished leadership, service and dedication to the Art Center.

Outgoing Association President

Jan Poulson
In appreciation for her commitment and dedication to the Art Center and its mission.

Contributing Businesses

Avery Sign Company
Chesterman Company
KTIV-TV
Sioux City Journal
VT Industries
Acknowledged for their strong community spirit expressed through their generous contributions of company resources to help the Art Center.

EDUCATION VOLUNTEERS OF THE YEAR

Docent Volunteers of the Year

Becky Bowers, Janice Bristow, Barbara Burnside, Charlotte Cockburn, Margot Chesebro, Joan Jackson, Claire Miethke, Vivian Miller, Kathy Mugan, Pat Ruba, Rosemary Sheehan, Mary Jo Smith, Jerry Stroup, Paula Warp, and Mary Lee Wise

Studio Assistant Volunteers of the Year

Rachel Fiedler, Jimmy Thelen, and Tommy Thelen

Artsplash Volunteers of the Year

Anne Cleghorn, Angel Nolen and Dan Rumberger

ARTFUL APPRECIATION

GIFTS, BEQUESTS, MEMORIALS, TRIBUTES, & UNDERWRITING

Annual Fund

John & Barbara Aalfs
Joanne K. Alberda
Eugene & Lola Anderson
John & Lyncia Baller
Jack & Janice Bristow
Bernie Burke
Larry & Sherry Foster
Gregg & Carla Galloway
Bob & Phyllis Gillespie
Andrew & Paige Gray
Edith Greenstone
Dr. Susan Hatfield
Mike & Sharon Hobart
Tom & Margaret Holland
Terry & Carol Hudson
Mary M. Julius
Sandra L. Kangal
Janice & Clayton Kooiker
Mr. & Mrs. Darrell Lake
Dave & Lori Layhee
Barry & Sue Loughridge
James & Mary McClintock
Linda & Dale McKinney
Ron & Dodie McManamy
Lynn & Laurie Mills
Dave Nitzschke
Sharon Ocker
Mr. & Mrs. C. Wilson Persinger
Mark & Polly Peterson
Jillayne & Brad Pinchuk
Sirry Hjaltadottir & Thor Ragnarsson
Jo Rizk
Larry & Pauline Sensenig
Samuel N. Shapiro
Beverly B. Smith
Garrett & Carol Smith
Mike & Mary Walsh
Marlene & Paul Vander Wiel
James H. Warner
Dr. Roger & Anita Wendt
Larry D. & Becky Williams
Dan & Arjes Youngblade
Bud & Joe Ziebell

General Endowment Fund

Aalfs Family Foundation

Estate Bequests

In Memory of Donna Carlson;
her parents, Caroline & Alvin M.
Carlson; & her brother, Arlo Carlson
In Memory of Virginia Cooper

COMMITTEES

Contemporaries

Mindy Krause - Chair
Jeana Goosman
Melissa Jensen
Jennifer Letch

Expansion Committee

Dr. Richard Brown
Jay Chesterman
Bob Gillespie
Jeana Goosmann
Tigger Jensen
Steven Kammerer
Jan Poulson
Carlos Rodriguez

Program Committee

Steven Kammerer
Terri McGaffin

Public Art Committee

Dr. Richard Brown
Roger Caudron
Paul Chelstad
Dave Dorsett
Terry Hoffman

EDUCATION

Docents

Becky Bowers
Jamie Bowers
Janice Bristow
Barbara Burnside
Margot Chesebro
Charlotte Cockburn
Martha Ericson
Sharon Hobart
Joan Jackson
Alison Kipp
Claire Miethke
Pat Ruba
Rosemary Sheehan
Mary Jo Smith
Jerry Stroup
Vivian L. Miller
Kathy Mugan
Pat Ruba
Rosemary Sheehan
Mary Jo Smith
Jerry Stroup
Paula Warp

Education Classroom

Assistants

Martha Ericson
Rachael Feidler

Chad Hasselbrock
Cici Iverson
Hanna McElroy
David Miller
Brenda Thelen
Jimmy Thelen
Tommy Thelen
Maggie Vondrak
Natalie Vondrak

Education Intern

Tanya Anderson
Kim Jessen
Noel Vondrak
Allysa Whear

Exhibition Volunteer

Donna Kennedy

FUNDRAISING & SPECIAL EVENTS

ARTrageous '08

Sandy Ellis – Co-chair
Beth Ellis Kollars – Co-chair
Joyce Barnes
Aaron Beutler
Amy Chace
Jay Chesterman
Mari Kaptain Dahlen
Sherry Foster
Beth Fravel
Helen Glazer
Jeana Goosmann
Shannon Liddell
Cathleen McGowan
Jan Poulson
Yourna Rose
Melissa Smith
Corky Wells

ArtSplash 2007

Tonia Abell
Virginia Anderson
Amanda Baker
Treaa Baker
Trent Baker
Lynne Baller
Brenda Barwick
Janet Beck
Tracia Blom
Holly Boston
Anne Cleghorn
Jill Collins
Sheri Cork
Sandi Corrigan
Norma DeLao

Beth Fravel
Ed Fravel
Sandi Fravel
Gabriella Galinsky
Melissa Haley
Carolyn Hauptmann
Roger Jensen
Alison Kipp
Linda Lees
Craig Mansfield
Linda Mansfield
Debra Marquese
Jennifer McReynolds
Bruce R. Miller
Jerry Morgan
Cynthia Moser
Diane Neri
Angel Nolen
Donna Olson
Kevin O'Neal
Sarah O'Neal
Skip Perley
Marne Pierce
Neva Pierce
Helena Potash
Jan Poulson
Joyce Rasmussen
Kim Rathman
Zach Rathman
Lillian Rodriguez
Dan Rumberger
Michelle Tedrow
Mike Unger
Susan Unger
Brandon Walker
Robbie Wells
Anita Wendt
Roger Wendt
Kim Wink
Randy Wink
Carolyn Yockey

Membership Campaign

Joyce Barnes – Co-chair
Jay Chesterman – Co-chair
Jillayne Pinchuk – Co-chair
Amy Chace
Helen Glazer
Jeana Goosmann
Nathan Kalaher

Warhol'd Project

Jan Poulson – Chair
Jay Chesterman
Beth Ellis-Kollars
Kevin Kjeldseth
Shannon Liddell
Michael Moderski

[Memorial Honoring
Taffy Bergeson](#)

John & Linda Barker
Kathryn Holtze
Kevin & Sheila Jacobson
Ramona Kelly
Barbara & Jim Knoepfler
Doris Lytle
Merrill Lynch Seattle
Complex employees
Michael Maroni
Jo Rizk
Carol Schmidt

[Memorial Honoring Dr. Albert](#)

Blenderman
Dianne M. Bostic
Susan Nelson
Beverly O'Brien
Norma Peters
Robert V. Powell

[Memorial Honoring
Willis DeRoos](#)

Constance K. Barkley
Patty Day
Joan DeWitt
M. Lynne Kaiser &
Raymond Teske
Dennis & Mary Ann Metcalf
Greg Moin & Jody Schnabel
Jane A. Nichols
Margaret Packard &
Anne Packard Kotlik
Larry & Holly Sales
Robert M. Seff
Doug & Liane Welte
Nan Wilson
Charese Yanney
Jim & Do Yanney

[Memorial Honoring
Mary W. Everist](#)

Ramona R. Kelly
Ronald & Joan Krage
Margaret Knapp
Mr. & Mrs. Carleton H. Magoun
Norman & Carolyn Sloan

[Memorial Honoring
Jerry O'Connor](#)

Guy & Lynn Posey

[Memorial Honoring
Tony Simoni](#)

Susan Ahrendt
Frank & Sandi Baron
Darrell & Sharon Beck
Cathy Bishop

Elber Bottorff &
Erlene Stevenson
Ann Brodersen
Randy & Claudette Brower
Denny & Laura Bullock
Barb Burnside
Rolland & Sally Burr
Rick & Ron Cheney
Marilyn Christiansen
Chuck Cooley & Marge Meier
Kathy Crowl
Mike & Bernie Culver
Tim & Kellye Dailey
Dakota Dunes

Community Assn
Randy & Sandy Davidson
Jim & Helen Foix
Peggy Giudice
Max & Sharon Godfrey
Carl & Shorty Graitm
John & Patty Harrison
Wayne & Sharon Harrison
Roger & Janice Henrichson
Carl & Char Hesse
Sherry Hopkins
Roger & Judy Huot
Paul & Suzi Kaiman
Denise Kastner
Alex Kott & Alice Sailors
Ron Krause
Arlette Kretschner
Trease & Jeff Kuecker
L & L Distributing Company
Ted Lamourex & Jennie
Stowers
Bob & Dee Lennon
Pete & Michelle Liebfarth
Patty Lloyd
Rex & Paullette Luesebrink
Ken & Tam Maaske
Jim & Elma Mandacino

Bob McFarland
Midwest Industries
Missouri River Boat Club
John & Kim Mitchell
Dave Nelson
Jodi Nelson
J. Newbury
Butch & Marsha Newman
Wayne & Colleen Nielsen
Dennus & Janice O'Keefe
Olso Farms
Jim & Julie Peck
Roger & Lisa Peters
George & Ann Peterson
Charlie & Eileen Prochelo
Bill Recker
Jerry & Mary Reinders
John & Virginia Renner

Dean & Chris Robeson
Joe & Sheryl Rose
Dave & Judy Sabag
Leonard & Betty Schmidt
Bernie Schreiber
Ed & Hane Sebring
Keith & Connie
Shellhammer
Rob & Deb Schultz
Matt & Jessica Simoni
Patsy Simoni
Ron & Kay Simoni
Tony & Judi Simoni
Jody & Gina Sitzmann
Leon Skuodas
Judy Smith
Bill & Pearl Snyder
Ralph Stephan
Curt Stover &
Marilyn Prescott
Ray & Carol Sundquist
Suter Services
Julie Swalve
Mike & Jan Swanson
Micheal Sweeney
Rose Taylor
Leo & Tim Torticil
Joe & Diane Twidwell
Sgt. Brad & Vicki Ulken
Curt & Marlene Vanderloo
Judi Vondrak
Steve & Jackie Warnstead
Agnes Weber
Dan & Stormie Westphal
Adele Weiland
Roger & Linda Zanarini

[Memorial Honoring
Jack Wilson](#)

Frank & Sandi Baron

[Tribute Honoring Helen Glazer](#)

Irene Fisher
Rick & Regis Garvey
Edith Greenstone
Bertel M. Lewis
Louetta Lipshutz
Lorraine Bailin Miller
Beverly Peterman
Michael & Barbara Platt
Kathryn W. Simon

[Education Underwriting
Brett & Katherine Patton](#)

[Paul Chelstad
Exhibition Underwriting](#)
Avery Brothers
Jeff Baldus

Jamie & Becky Bowers
Nancy Giles
Chris Jensen & Beth Harms
Alan & Terri McGaffin
Cindy McLaughlin & Dwight
Packard
James & Fern Rocklin
State Steel - Dave Bernstein
Fiona Valentine
Waitt Family Foundation

[Ary Stillman
Exhibit Underwriting](#)

Anonymous
Jack & Gail Bernstein
Candace Chace & Richard Levich
Milt & Helen Glazer
Edith Greenstone
Jewish Federation of Sioux City
Kent & Michele Ivener
Mrs. Louetta Lipshutz
Robert D. Mishne
Michael & Helena Potash

[Valerie Beller
Exhibition Underwriting](#)
Aalfs Manufacturing

[Grant for Liz Miller Installation](#)
National Endowment for the Arts

ARTSPASH: THANKS TO OUR 2007 SPONSORS

Skysail

Cable One

Tidal Wave

Avery Brothers Sign Company
Chesterman Company
Full Effect Productions
Jan Poulson Advertising
Kjeldseth Design
Northwest Airlines, Inc.
Sioux City Journal
Thompson Electric Company
and Electric Innovations
Wells' Blue Bunny

Air Wave

BOB FM
Cable One
Channel 9 KCAU-TV
Fox Sports 620 KMNS
KG95
KISS 107FM
KMEG 14 News
KOOL
KPTH FOX 44
KSCJ
KSUX
KTIV News Channel 4
KWIT-KOJI
1470 KWSL / LaPreciosa
Siouxland CW
Y101.3
Z-98

High Seas

Best Western City Centre
City of Sioux City Convention
Center, Auditorium & Tourism
Holiday Inn
Max Premiums
Starbuck's Coffee Company

Smooth Sailing

Bierschbach Equipment & Supply
FEH Associates, Inc.
First American Bank
L & L Distributing Company
Mercy Medical Center
St. Luke's Health System

Transportation

Brokers Alliance
Demco Printing
Great West Casualty
Insurance Company
idesigner / Sarah Conley
Innovative Benefits Consultants
Interbake Foods, LLC
Carolyn B. (Tigger) Jensen

Kahill's Steak-Fish &
Chophouse
Klinger Companies, Inc.
MidAmerican Energy Company
Minerva's Restaurant and Bar
Outback Steakhouse
Red Robin Gourmet Burgers
Smurfit-Stone Container
Corporation
Wellmark Blue Cross
and Blue Shield

Rip Tide

Bomgaars
Christiansen Family
Foundation
Gerkin Windows & Doors
HyVee Stores
Lindblom Services, Inc.
Office Systems Company
Phillips Kiln Service, Ltd.
RODA Manufacturing, Inc.
Siouxland Magazine
A Step in Thyme Florals
Terra Industries, Inc.
Dr. Lloyd Tinkle
Vassar Writing Associates /
Lindsay Zortman
Verizon Wireless
Wilson Trailer Company
Randy and Kim Wink

Bench Sponsors

belle touché salon & day spa
Knoepfler Chevrolet

Crew Hands

Barbara and Jack Aalfs
Accent Timbers
American Water
Bryan and Wini Arneson
Raul Banagale
Wayne and Joyce Barnes
Timothy and Leslie Bebee
Bekins Fire & Safety
Mike and Margie Bennett
Frank Brienzo and
Barb Pittman
Dr. Josh and Peggy Brower
Mike and Linda Cadwell
Katherine Calhoun
Calligraphy by Jan/Jan Levine
Margot Chesebro
Clarion Hotel and
Conference Center
Rusty and Karen Clark
Jon and Anne Cleghorn
Downtown Partners Sioux City
Bill and Lyn Edmonds

Engineering and Construction
Services, Inc.
Fleet US
Ed and Sandi Fravel
Milt and Helen Glazer
Graphic Traffic
John and Di Gray
Edith Greenstone
Paul and Evonne Gregory
Dr. Richard and Mary Hettinger
Iowa-Nebraska State Bank
John Morrell & Company
Ardys Johnson
JOMAC Contracting
Barbara Krigsten
Gordon and Jane Krogh
L & L Builders Company
Barry and Sue Loughridge
M+ Architects
Marx Leasing
Jim and Mary McClintock
Gerald and Sheryl McGowan
Ryan and Tracy Meis
Eleanore Metz
Midwest Equipment, Inc. /
John Deer
Morningside College
Grace Noonan
Doug and Cathy Palmer
Palmer Candy Company
David and Joan Paulsrud
Perkins Family Restaurant
& Bakery
Ginny Peterson
Tom and Glenda Plaza
A Point of View Photography /
Shannon Liddell
Premier Bankcard
Michael and Linda Prosser
Jo Rizk
Dr. Bryce and Carol Robison
Jim and Fern Rocklin
Rogers Electrical Supplies
Company
Brent and Diane Rosenthal
Dr. Jim and Sharon Rossiter
Roto-Rooter Sewer and Drain
Services
Eldon and Beth Schroder
Steve and Marcia Shook
Art and Eileen Silva
Sioux City Truck Sales, Inc. /
Peterbilt
Sioux Rubber & Urethane
Staber Meats, Inc.
Stan Houston Equipment
Company
Tom and Roxie Ullrich
Lee and Ruth Van Voorhis

Don Veltkamp
James H. Warner
Dr. Roger and Anita Wendt
Jim, Do, and Charese Yanney
Mrs. Mose Yanney

Contributors

Karmon Amsler
Greg and Maria Andersen
Richard Bokemper, D.D.S., P.C.
Nancy Boysen
Jack and Janice Bristow
Dr. Norman and Lillian Brodkey
Larry and Diana Countryman
Fareway Stores
Ray and Kathleen Flynn
Nancy S. Giles
Janet Goodrich
Dr. Greg Hoversten
Susan Hunnel
JKL Enterprises, Inc.
Sandra Kangall
Katch-A-Cup
Mona Kelly
Shawn McCoy
Sharon Ocker
The Olive Garden
Papa John's Pizza
Don and Mary Phipps
Carolyn Rants
Sioux City Paint & Decorating
Siouxland Trailer Sales, Inc.
The Sugar Shack
Timberlake Development
Company
Jim and Lois Walsh
Mary Walsh
Wireless World
Mark and Jacqueline Wyant
Dan and Aries Youngblade

ASSOCIATION MEMBERS

Renaissance Society

Jack & Barbara Aalfs
Kenneth & Barbara Ackerman
Jeff Baldus *
Tim and Leslie Bebee •
Cy & Karen Chesterman
Paul & Peggy Dougherty
Hubert Everist
Jeanne Gardner
Milton & Helen Glazer •
John & Karen Gleeson
Irving, Jr. & Tigger Jensen •
Colin & Pokey Jensen
William H. & Nancy Metz
Wilson & Louise Persinger
Bob & Ginny Peterson Foundation
Mark & Polly Peterson
Jim, Do & Charese Yanney

Leader

Marilyn Christiansen
Al & Karen Harris
Gregg & Carla Galloway
Helen K. Gleeson
Edith Greenstone
Marvin & Karen Heidman
Craig & Jennifer Letch •
Richard & Shannon Liddell •
John & Connie Persinger
Jan Zelfer-Redmond &
Tom Redmond

Charter

Wayne & Joyce Barnes •
*Margot Chesebro **
Dudley & Sally Conner
John Cordoue & Sylvia Kuennen
Adam & Alyssa Feiges
Joseph & Luanne Giesler
Michael & Tauhni Hunt
Bill Knoepfler & Family
Dennis Mahr & Carol Langin
Jane Meginnis
Dan & Cynthia Moser
Khalid, Terri & Sam Rasheed
Jerry Stroup •
Ray & Marlene Sturdevant
Dr. Lloyd L. Tinkle

Donor

Virginia Asmussen
Craig & Sandy Bainbridge
Dr. & Mrs. Robert R. Billiar
Richard & Joyce Bond
Brad & Linda Bornholtz
Patricia Bortscheller
Jack & Janice Bristow
Josh & Peggy Brower
Marilyn R. Brown

Dr. & Mrs. Randall Burnight

Thomas & Jean Carroll
Marc & Bev Christofferson
Jack & Phyllis Conner
Larry & Julie Delperdang
Leslie Duling
Joel & Debi Durham
Bill & Lyn Edmonds
Richard & Marilyn Engle
Brian D. Everist
Dr. Paul & Penny Fee
Bill & Debbie Feiges
Mike & Janet Flanagan
Gary Ford
Jim & Joanne Froggatt
Mike & Katie Gecewich
Galen & Carlene Gehrts
Mrs. W. Jefferson Giles III
Richard & Carrie Gitter
John & Di Gray
Rita Grimm & Robert Harris
Michael & Mary Gay Gunsch
Stewart & Mary Ellen Hartman
Mr. & Mrs. John Holtze
Monica Hudson
Robert & Paula Jacobsen
Charles A. Johnson
Mary M. Julius
Dan & Ellen Kaplan
Fran & Vernice Kingsbury
Kevin & Terri Kjeldseth •
Jim & Barbara Knoepfler
Sonya Kostan
Randy & Pam Kramer
Mark & Mindy Krause
Glenn & Marian LeGrand
Julian & Lisa Leopold
Mrs. Louetta Lipshutz
Mary A. Loneragan
Al & Delores Maser
Paul & Mary Ellen McGuirk
Cindy McLaughlin & Dwight Packard
Beth Noel
Grace Noonan
Stan & Barbara Orzechowski
Dr. & Mrs. David Paulsrud
Skip & Cathy Perley
Joan B. Peyer
Brad & Jillayne Pinchuk
Patricia Probasco
Dr. Carolyn J. Rants
Dr. Bob & Kaye Rasmus
Jean Rhinehart
Robert & Dorothy Rice
Mr. & Mrs. William Ellis Rodawig
Carlos & Lillyan Rodriguez •
Elizabeth Everist Romeo,
John Romeo & Patrick Romeo
David & Yourna Rose

Drs. Danielle Prince & Kurt

Rosenkrans •
Rex & Maria Rundquist
Bob & Sandra Sabel
Steve & Kate Saulsbury
Tim & Betty Schoeneman
Robert & Molly Seff
John F. & Elaine Seubert
William & Cora Sibley
Dr. Thor & Karin Swanson
Patrick & Debra Vezeau
John & Tana Wagner •
Dr. Roger & Anita Wendt
Thomas & Mary Wilson
Randy & Kim Wink
Susan Wollesen
Bud & Joe Ziebell

Family

Jess Ackerly & Owen Hubert
Steve & Theresa Alloy
John & Karmon Amsler
Eugene & Lola Anderson
Jason & Julie Anderson
Rick & Kristi Armstrong
Bryan & Wini Arneson
Tom Atkinson & Paula Warp
Barry & Sandy Backhaus
A. Frank & Sandra Baron
Cathy Beard
Aaron & Tawnya Becker
Berenstein Family Foundation
Pierre & Linda Bernard
The Betancourts
Manny & Mary Bikakis
William & Dianne Blankenship
Jutta Blume
Richard & Theresa Bokemper
Douglas M. Bonnes
Ron & Linda Bowden
Jamie & Becky Bowers
Tim & Debbie Boyle
Melinda Brienzo
Pat & Samantha Brown
Kent & Marci Broynhill
Julia Bryan
Doug & Lisa Burg
George M. & Myrna Burg
Linda & Mike Cadwell
Michael & Sandra Cannon
Dorothy Carpenter
Glenda Castleberry & Ken Beekley
Roger & Joy Caudron
Jim & Sandy Champion
Cy, Jr. & Dana Chesterman
Don Claeys
Nancy Clark
Thorpe & Joann Clark
Jon & Anne Cleghorn

Bill & Sue Conner

Chuck & Lisa Corbett
Joe & Pam Coughlin
K. Anne Cowley
Dave & Arlene Curry
Joseph & Kristine Danner
John A. Day
Betty W. de Groh
Mr. & Mrs. James DeBauche
Gerald & Maryann Deibert
Mark & Renee DeMay
Rick & Val Dohrmann
Dick, Caroline & Erin Donaway
Tim & Mary Duax
Quentin & Sue Durward
Lance & Kathy Ehmcke
Bob & Sandy Ellis •
Michael & Carolyn Ellwanger
Tori Engelhardt
Mr. & Mrs. Daniel Everist, Jr.
Mike Feathers
John & Jill Finken
Larry & Sheryl Foster
Steve Frank
Ed & Sandi Fravel
Calle Friesen
Gamm Family
Tom & Carol Geu
Bob & Phyllis Gillespie
Kevin Glissman & Tasha Barker
Chadd & Jeana Goosmann
Dixie Gors
Dr. & Mrs. Jim Grabouski
Mr. & Mrs. G. Thomas Graham
William Graves
Harry & Tina Gray
Daniel & Gyna Greenwell
Paul & Evonne Gregory
Dr. Roger & Linda Gunn
Joe Haak
John & Marilyn Hagberg
Steve, Marlene, Mia & Chase Hammerstrom
Lance Hankins & Darrell Langley
Rob & Carol Hardy
Dan & Sally Hartley
Jeffrey W. Henderson
Rodney Henery
Ken & Lexis Henrichsen
Thomas & Vicki Hepperlen
Rev. & Mrs. Arnold Herbst
Leslie Hershkowitz
Richard & Mary Hettinger
Bill & Jennifer Heyborne
Gene & Glenda Hill
Dick & Lynne Hodgman
Thomas & Margaret Holland
Karol Holton Family
David & Barbara Holtze

Rick & Francine Holtzen
Bruce & Jeanette Hopkins
David & Diana Howard
Terry & Carol Hudson
Julie Humbert
Carleton & Joan Jackson
Tim & Rita Jacobsen
Alison Jensen
Chres & Renee Jensen
Chris Jensen & Beth Harms
Mark & Kay Jensen
Vibeke T. Jensen
Eric & Judy L. Johansen
Harland & Jeanette Johnson
Jim & Lynne Johnson
Joanne Johnson & Mark Bennett
Larry & Margee Joines
Greg Jones
Amy Julius
Lucinda Kafton
Suzi & Paul Kaiman
Mike & Alecia Kelley
Kyle & Jacki Kelly
Dr. Charles & Shari Kiple
Jayne Koch
Charlotte Kock
Christy Kolker
Burt & Beth Ellis Kollars •
Clayton & Janice Kooiker
Gordon & Jane Krogh
Carrie Kuehl
Rosie & Herb Kuehne
Dan & Mary Jo Kvidera
Roger & Julie Lambert
Ruth & Dwight Lang Family
Dave & Lori Layhee
Dan & Jessica Lederman
Ritch & Kathy LeGrand
Bill, Cyndi & Zack LePay
Richard Levich
Peter & Julia Licht
Barry & Sue Loughridge
Tom & Carla Lovan
Skip Magoun
Pam Mahler
Stee L. Maxwell
John & Juliana Mayne
Debbie R. McCalla
Karen McCarthy & Ken Todd
Jim & Mary McClintock *
Terri McGaffin
Charles & Rebecca McKenny
Ron & Dodie McManamy
Mike & Ann Marie McTaggart
John Meis
Dale & Lori Meyer
Arthur & Claire Miethke
Dan & Angela Miller
Jesse & Elizabeth Miller

Vivian Miller
Robert D. Mishne
David & Lou Ella Mitchell
Greg & Jill Mitchell
Michael & Susan Moderski •
Janet S. Morgan
Roger & Valenda Morrissette
Stan & Mary Munger
Patrick & Cindy Murphy
Sankar & Kamalam Muthukrishnan
Maurice & Sue Nieland
Dave Nitzschke
Heidi Oligmueller
David & Larayne Olson
Jerry & Rae Palmer
Martin Palmer
Stephanie Parry
Chuck & Marti Peterson
Ken & Robin Peterson
Lisa Peterson
Kevin & Brandy Pettit
Plathe Family
Tom & Glenda Plaza
Michael & Helena Potash
Greg Pranke & Julie Miller-Pranke
Mike & Linda Prosser
Latha Raghavan
Christopher & Trudy Rants
Ron & Jane Rapp
Gary & Carol Ratcliff
Chuck & Joy Robbins
Jim & Fern Rocklin
Ted & Chrystl Roman
Jim & Liz Roscovius
Fran Sadden
Maita Sadoff
Jason Saltzman
Kathleen Saltzman
Myron Sargisson
Patrick & Catherine Saulsbury
William R. Saunders
Margaret Saville
Kathleen C. Saxe
Dr. Donald & Mary K. Schenk
Mrs. Forest Schoeneman, Sr.
John & Amy Schultz
Larry & Pauline Sensenig
Marina Sereda
Ed & Carol Shane
James & Rosemary Sheehan
Keith & Connie Shellhammer
Marc, Maria, Madisen & Brenan Sherman
Mary Alice Shores
Art & Eileen Silva
Brenda Sitzman
Gina Lawler-Sitzmann & Jody Sitzmann
Jean Smith
Kam & Melissa Smith

Linda L. Smith
Stephen J. & Linda Smith
MacDonald & Constance Smith
Richard & Judy Smith
Roger & Mary Smith
Scott & Mary Jo Smith
Dawn Snyder
Ed & Rhea Steck
Dr. Richard Steinbach
Scott & Diane Stevenson
Robert & Suzan Stewart
Donna Tindall
Lea Ann Tremayne
Tom, Roxie & Tony Ullrich
Rick & Wendy Van Hatten
Lee & Ruth Van Voorhis
Laura Vaughan
Jim & Kathy Verschoor
Don & Wanda Veltkamp
James R. & Alice Villone
Jeff & Della Vlaanderen
Lesley Vlaanderen
Jacqueline Volz
Kent & Collene Vriezelaar •
Rhonda Wadzinski
Jim & Lynne Walker
Rich & Karlene Waller
Michael & Mary Walsh
Cindy Wareham
Kitty Washburn & Mike Slechta
Tom & Ruth Weekes
Lewis & Renee Weinberg
Kathleen Weisz
Scott & Corky Wells
Bill & Judy Welu
Gary & Nancy Wenell
Jody Wentz
Bonnie West
John & Christy Whalen
Jim & Bev Wharton
Noel & Patricia White
Dr. & Mrs. Joseph Wiedemeier
Larry D. & Becky Williams
Mr. & Mrs. Robert V. Williams
William Willson
Robert & Mary Lee Wise
Michael & Pat Wojcik
Gordon & Marcia Young
Leslie Zyzda

Individual
Kathy Addison
Joanne K. Alberda
Richard Allen
Gail Ament
Ann Balakier
Jan Bass
Helene Berg
Dr. Randall P. Bergen

Jonine Binkard
Ruth C. Bittner
Bob Booth
William Boss
Michelle Bostinelos
Maureen Bowles
Judy Boyle
Lacy Bryce
Beth Bunjes
Bernie Burke
Tom Burns
Sharon Burton
Jenny Bye
Angelica Camberos
Kayli Carda
Jennifer Cerutti
Jay Chesterman
Deb orah Combs
Kegan Copeland
Micaiah Cvrk
Kathleen Danielsen
Gracia Davenport
Mary Deck
Terri Smith Dooley
Glenda Drennen
Patty Drumeller
Warren Dunkle
Dr. Bruce C. Ellingson
Margo El-Zeini
Connie Engebretson
Martha Fagg
Willard N. Fish
Amy Foltz
Beth Fravel
Deb Gengler-Copple
Jane Gilbert
Kathleen E. Golden
Janet R. Goodrich
James Hartje, MD
Sarah Henrich
Annemarie Higgins
Suzy Hoevet
Gerald W. Jansen
Katie Johann
Annie Jones
Sandra Kangal
Evelyn Keir
Dorothy H. Kelly
C. A. Kingdom-Knoepfler
Lacey Kirchmeir
Patricia E. Kirkegaard
Marty S. Knepper
Dale Landegent
Bonnie Lassen
Jan Levine
Tim Lohafer
Cleo Long
Camille Lydon
Sandra Lynch

Randi Mackey
Mary Macomber
Bethany Manning
Alice A. Marley
Joanne Marx
Ed Matney
Tad Maxwell
April McArthur
Patrick McCarron
Shawn McCoy
Sheryl McGowan
Ruth M. Ketelsen McLarnan
Benny Melton
Bruce R. Miller
Curt Miller
Bob Mohr
Diane DeLaine Molstad
Russell Movall
J. Marlene Mueller
Nicole Nelsen
Diane Neri
Richard Nevada
Jeanine Newton
Kandi Newton
Elinor Noteboom
Julie O'Connor
Marcy O'Connor
Melanie Olsen
Kriemhild Oudhuesden
Ellen B. Paciocco
Chris Parizek
Kathy Petrie
Kristi Pies
Kristi Quinn
Sally Reinert
R. Scott Rhinehart
Deb Ridders
Jo Rizk
La Vern B. Rush
Jo Shore
Kim Shuck
Beverly Smith
Elizabeth "Anne" Smith
Jane Sokolovske
Jonah Spake
Mary Stoltman
Judy Sweetman
Georgann Welding
Rhoda Tenuta
Tracy E. Thomas
Betty Thompson
Lucinda Tryon
Rod Uhl
Nancy Veit
Jim Villim
Barbara Walker
Dorothy Walker
Mildred Wallman
James H. Warner

Charlene Warren
Cindy Weber-Blair
Nan E. Wilson
Jeanne Wissing
Mrs. Mose (Ag) Yanney
Midge Zimmerman
Raleigh Zucker

Senior
Vivian Adams
Richard & Mary Anderson
Kathy Audus
Arlene V. Baldus
Hope Benton
Donna Bergeson
Joyce Mills Beumler
Edwin C. Blackburn
Tatiana K. Bodine
Thomas W. Boughn
Nancy Boysen
Norman & Lillian Brodkey
Diana Buddi
James H. Burnett
Katherine Calhoun
Tarquin & Frances Cameron
Dr. Dan & Coleen Chapman
Glen & Dolly Christensen
Bob & Jean Clem
Charlotte Cockburn
Audrey Cornish
Anne Danielson
Marge Danielson
Sam & Mickey Darrough
Thomas & Janice De Witte
Bill & Diane Drevs
Audrey Lundblad Ercolini
Helen M. Erickson
Claryce L. Evans
Gene & Alice File
Irene Fisher
Kathleen Flynn
Burton Frank
Helena M. Geels
Jay Gelfand
Donna Goodwin
Mike & Carolyn Goodwin
Emilie Grendler
Marilyn Hanson
Jean W. Hardie
Ron & Rima Hartman
Dr. Susan Hatfield
Robert Hecker
Shirley Heinke
Karen Herzoff
Beverly J. Hinds
Michael & Sharon Hobart
Mrs. Dorothy Ann Hodgman
Jane Hoffa
Corinne Holman

Marcia Hovland
Ona Iverson
Carl & Anne James
Colin & Pokey Jensen
Ardys Johnson
Donald M. Johnson
Ruth F. Johnson
Barbara Elliott Jones
Kent Jones
Les & Shirley Juon
Mina Karcher
Mona Kelly
Janet Kelsheimer
Jean B. Klopstad
Dr. B.G. Knepper
Jeanette Krage
Deloris Kramer
Ray & Barb Krigsten
Irene Kucinski
Reinert B. Kvidal
Marcia Levin
James & Arlene Lewis
Pam Lowe
Betty Mahr
Daisy K. Margeas
Harriett Marsh
Rodney & Jan Matz
Helen Logan Maxwell
Harriette McGuire
Bob & Nancy McIntosh
Sally Merrell
Jo Michaelson
Frances Mikkelsen
Jane K. Miller
Nancy J. Miller
Peggy Muzney
Clarice Neilsen
Jeannie Nemmers
Deb Newell
Charlie Noltze
Dr. Sharon D. Ocker
Michael C. Oliver
Garneth & Lorraine Oostenink
Kathleen A. Paine
Susan Peete & Don Torgerson
John & Carol Pemberton
Mrs. Roberta Pendleton
Bettina Perkins
Phyllis Powell
Marilyn Prescott
Franklin & Marit Pudas
Genece Quinn
Wes & Sherry Ratcliff
Lou Roach
Jerry & Pat Ruba
Joan Rupp
Pat Ryan
Donald Sappingfield
Molly Sarff

Margaret Ann Schwinn
Aurelia Scott
Helen Ann Sewell
Sam Shapiro
Bill & Kay Shelly
Sharon Shook
Shirley Smith
Eileen Sohl
Mrs. Carol Spellman
Cleo A. Spence
Delores Staber
Gary & Shirlee Stevenson
Eileen Stickels
Pat Stine
Curtis Stoever
Frances Sweet
Jacque Sweet
Helen Teig
Wanda Thibodeau
Mike & Lea Thompson
Ann Trudo
Judie K. Uhlir
Phyllis Van Evera
Paul & Marlene VanderWiel
Gilbert Vaughan
James & Lois Walsh
Molly Walters
Gerta O. Warnholtz
Mark Wetmore
Dr. Robert & Maxine Whiteside
Jo Widner
Helen Willenburg
Mr. & Mrs. Bob Wolverton
Jean Yamada
Edith E. Zahniser

Student

Aurora Adams
Annie Cory
Alexandra Determan
Drew Determan
Beau Durham
Mario Goevara
Chaya Gordon
Jesse Gordon
Ron Jenkins
Aimee Washburn
Davidson Wissing

Bold – New Member
Italicized – Upgraded Member
• Association Board Member
* Art Center Trustee

Art Center Association of Sioux City**2007/2008**

Jan Poulson, President
Jeana Goosmann, Vice President
Kent Vriezelaar, Secretary/2nd Vice President
Michael Moderski, Treasurer
Jay Chesterman, Past President

Joyce Barnes
Dr. Richard Brown
Amy Chace
Jane Gilbert
Tigger Jensen
Mari Kaptain-Dahlen
Tom Kingsbury
Kevin Kjeldseth
Beth Ellis Kollars
Dr. Delna Lee
Shannon Liddell
Jillayne Pinchuk
Dr. Danielle Prince
Carlos G. Rodriguez
Melissa Smith
Jerry Stroup
Vicki Thomas
John Wagner
Steven Witten

Distinguished Members

Leslie Bebee
Sandy Ellis
Helen Glazer
Milton Glazer

Junior League Liaison

Margaret Holman

Sioux City Art Center**Board of Trustees****2007**

Steve Kammerer, Chair
Margot Chesebro, Vice Chair

Eunice Acker
Jeff Baldus
Robert Gillespie
Mary McClintock
Doug Palmer

2008

Margot Chesebro, Chair
Eunice Acker, Vice Chair

Jeff Baldus
Robert Gillespie
Steve Kammerer
Mary McClintock
Doug Palmer

City Council**2008**

Michael M. Hobart, Mayor
Jim Rixner, Mayor Pro-Tem
Dave Ferris
Brent Hoffman
Aaron Rochester

Paul A. Eckert, City Manager

Art Center Staff

Al Harris-Fernandez, Art Center Director

Sandi Baron, Visitor Services
Michael Betancourt, Curator
Jenny Bye, Gallery Attendant/Installer
Jill I. Collins, Administrative Assistant
Regis Garvey, Development Coordinator
Lyle Listamann, Publications Coordinator
Jodi Melnichak, Gallery Attendant/Installer
Cathy Perley, ArtSplash Coordinator
Sara Lynn Pike, ArtSplash Assistant Coordinator
Shannon Sargent, Exhibitions/Collections Coordinator
Mary Vaught, Visitor Services
Kjersten Welch, Visitor Services
Nan Wilson, Education Specialist
Paula Yates, Accounting Clerk